

August 12-14<sup>th</sup> 2022

# COVID-19 Safe Implementation Plan

## Queensland Youth & Pony Dressage Championships





## Contents

<b>Key contacts</b> .....	<b>3</b>
<b>Statement</b> .....	<b>3</b>
<b>Intent of this plan</b> .....	<b>3</b>
<b>Scope</b> .....	<b>4</b>
<b>Principles</b> .....	<b>4</b>
<b>Implementation</b> .....	<b>5</b>
<b>1. Registration, entry and exit to QSEC</b> .....	<b>5</b>
<b>2. Travelling to and from and in the Competition Arenas</b> .....	<b>6</b>
<b>3. Avoiding Direct Physical Contact and Sharing of Equipment</b> .....	<b>7</b>
<b>4. Maintaining social distancing - compliance</b> .....	<b>10</b>
<b>Appendices:</b> .....	<b>13</b>



## Queensland Youth & Pony Dressage Championships COVID-19 Safe Implementation Plan

### Key contacts

**Event Director:** Anita Barton 0433447692 [ascampton@hotmail.com](mailto:ascampton@hotmail.com)

Kerri-Lee Ryder 0428446681 [circlek@live.com.au](mailto:circlek@live.com.au)

**Stable Warden:** Cheryl Stephens 0400767858 [cherylandtony1@bigpond.com](mailto:cherylandtony1@bigpond.com)

**COVID Officer:** Anita Barton 0433447692 [ascampton@hotmail.com](mailto:ascampton@hotmail.com)

**Chief Steward:** Anthony Reckin 0437838059 [anthony@me.com](mailto:anthony@me.com)

### Statement

Dressage Queensland is committed to implementing a COVID -19 Safe Implementation Plan (the Plan) to minimise the risk of COVID-19 transmission between riders, officials, volunteers, sponsors, supporters and members of the public participating in the Jembrae Warmbloods Queensland Youth & Pony Dressage Championships event held at the Queensland State Equestrian Centre (QSEC) on 12 to 14 August 2022.

Approved

- This Plan has been developed in accordance with the:  
[Outdoor Sports Industry Plan](#) approved by the Queensland Chief Health Officer on 5 June 2020, which includes equestrian and horse sports, and
- [Equestrian Queensland Event Biosecurity Plan May 2020](#), (in particular the Event Protocol Checklist (Annexure A page 11 and 12 and COVID-19 Signage (Annexure B page 13)).

### Intent of this plan

The Plan outlines how the Outdoor Sports Industry approved plan will be implemented at QSEC to ensure adherence to;

- site registration/recording contact details of individuals who enter the QSEC site,
- signage and hygiene measures at all entry and exit points,
- management and separation of groups in competition and warm-up spaces/zones
- avoiding direct physical contact and sharing of equipment
- maintaining social distancing in common areas including signage and hygiene,
- communicating for safety, prior to and during the event
- review and monitoring of COVID Safe conditions throughout the event.



## Queensland Youth & Pony Dressage Championships COVID-19 Safe Implementation Plan

### Scope

This Plan applies to all riders, officials, volunteers, sponsors, supporters and members of the public participating in the Jembrae Warmbloods Queensland Youth & Pony Dressage Championship event held at the Queensland State Equestrian Centre (QSEC) on 12 to 14 August 2022.

The Plan should be read in conjunction with the Outdoor Sports Industry approved plan and QSEC Site Map.

### Principles

Four guiding principles provide the basis for implementing and maintaining COVID-19 safety of all at the Saddlefitter Brisbane QYPC event:

- **Leadership** and governance to implement communication strategies, safety systems and processes.
- **Accountability** to set up and maintain systems and processes to support effective social distancing, hygiene, and registration.
- **Transparency/Clarity** to have clear roles, responsibilities, and clear procedures for making and communicating decisions related to COVID-19 safety.
- **Efficiency** to ensure the appropriate use of signage and social media for communicating safety and best practice and use of signage and resources to achieve communicating for safety.



## Implementation

### 1. Registration, entry and exit to QSEC

#### Riders and support crew

Riders must notify the Event Organiser with their intended arrival date and time prior to the event and notify the Event Organiser if there are changes to their anticipated arrival time.

All attendees (riders and support crew) to:

- Register attendance at the event by means of Horse Health Declarations and contact details provided at the time of entry.

Compliance on arrival will be monitored by the Stable Warden and Stewards. On initial arrival to the venue riders, grooms and nominated essential additional persons will receive a wristband once they have checked themselves into the venue with the stable warden.

***Please note ONLY wristbanded individuals will be permitted in the stable area. The Organising Committee request understanding and compliance from riders with this requirement in these unprecedented times. Breaching of this requirement will result in an initial warning and following a second offence riders and their entourage will be asked to leave the venue.***

#### Volunteers, officials and event personnel

The Event Director will keep a schedule of all personnel essential to the running of the event and day/s/time/s they are expected on site. On initial arrival to the venue riders, volunteers, officials and event personnel will receive a lanyard to identify them as event personnel.

#### Trade vendors

Trade vendors must notify the Event Organiser with their intended arrival date and time prior to the event and notify the Event Organiser if there are changes to their anticipated arrival time. On initial arrival to the venue trade vendors will receive a wristband to identify them as Trade Vendors. As part of their COVID plan, trade vendors are encouraged to bring hand sanitiser and gloves for their own personal use. There will be sufficient hand sanitiser supplied by the venue and event for customers.

#### Spectators

Spectators will be permitted at this event. Numbers on site will be as per current QLD Government outdoor sporting recommendations.

Spectator entry will be via

- Checkpoint on Tuckeroo Drive (200m inside from Beerburrum Road) with public parking adjacent to parklands (areas 13 and 14).
-



## Queensland Youth & Pony Dressage Championships COVID-19 Safe Implementation Plan

### Conditions of entry to the event will be on the:

- Entry form website (Nominate)
- Competitors letter
- Trade vendors letter
- Event website
- Event Facebook page
- Prominently displayed at the venue entry points.

Conditions of entry are:

DO NOT ENTER QSEC if you have:

- fever
- cold or flu like symptoms, even if mild (cough, sore throat, shortness of breath)
- are a confirmed case of COVID-19 (coronavirus) in the last 7 days.

**No-one will be permitted on site before the Event Director and Stable Manager. The date and time competitors may enter the site will be published in the competitors letter and on the event social media pages and website. Riders must be vacated from QSEC no later than Sunday 14<sup>th</sup>.**

## 2. Travelling to and from and in the Competition Arenas

Classes are staggered in accordance with the event schedule.

### Riders and horses

Riders and horses to KEEP LEFT when travelling to and from warm-up areas and dressage arenas on designated competitor access tracks as marked on QSEC Facility Map.

### Spectators

Spectators will not be permitted in the stable and camping areas, warm-up areas.

### Outdoor arenas (Area 10):

- All horses and riders to warm up in area 11 for up to 60 mins before competing. There is no contact or shared equipment. Access gate is monitored by a volunteer.
- Only one horse and rider competing in each arena (60x20m) at any point in time. There are 4 arenas in area 10 with marked entry and exit points. Entry to the competition arena is under the guidance of an official steward.





## Queensland Youth & Pony Dressage Championships COVID-19 Safe Implementation Plan

### Indoor arenas (Area 1 and 2).

- All horses and riders to warm up in the designated area adjacent to the Main Arena for up to 60 mins before competing. There is no contact or shared equipment.
- Only one horse and rider competing in each arena (Main Arena approx. 100 x 50m and Arena 2 approx. 70 x 50m). Entry to the competition arena is under the guidance of an official steward.

Officials will monitor and control the number of horses and riders entering both warm-up areas (minimal to no contact).

Arena familiarisation in the indoor arenas will only be permitted at nominated times. Riders that are not warming up for their class will not be permitted to ride their horses in the indoor complex outside of familiarisation times.

During arena familiarisation only six horse-rider combinations will be permitted in each of the three indoor arena areas at any one time.

### **3. Avoiding Direct Physical Contact and Sharing of Equipment**

#### Competitors

- There is no sharing of equipment or direct personal contact during dressage events.
- Attendees must adhere to social distancing guidelines as recommended by the Queensland Government and Department of Health.
- Hand sanitiser will be available throughout the venue and riders and grooms are encouraged to sanitise their hands regularly.
- Professional groom or braiders must wear disposable gloves and sanitise all equipment between each horse and maintain social distancing at all times.
- Camp-kitchen in stable complex – BYO utensils.
- Riders, grooms, and essential persons should adhere to family grouping restrictions and not gather within trucks or floats that are not part of their camping unit. Gathering outside of trucks is permitted so long as social distancing is maintained and BYO chairs and utensils.
- Regular compliance checks of the stable area will be made by The COVID Officer, Stable Warden, Stewards and Event Personnel. We ask that riders and essential entourage be understanding and compliant in any requests to maintain social distancing. Riders that are not respectful or continue to break the rules may be asked to leave the venue.
- There is adequate signage around the venue advising attendees of maximum numbers of persons permitted in each area. These must be adhered to.
- Only persons directly connected to a horse (rider or nominated groom) and the stable warden may enter a horse's stable or touch its stable door.
- Where possible, riders are encouraged to use their own camping amenities and avoid using QSEC amenities.



## Queensland Youth & Pony Dressage Championships COVID-19 Safe Implementation Plan

---

### Competition arenas

- There is no sharing of equipment or direct personal contact during dressage events. However, veterinarians, the official technical delegate and stewards (wear bright yellow EA jackets) may touch horses and equipment.
- It is the usual practice of veterinarians and officials to use disposable gloves and immediately discard them after touching an individual horse or equipment, and this practice will be maintained. Gloves, masks, wipes and hand sanitiser will be available at all steward stations. There will be rubbish bags available for easy disposal of consumables.
- The steward's areas at each warm-up will be cordoned off. No rider, groom, spectator or support crew will be permitted in the steward's area.
- Stewards will be provided with their own clearly marked copy of the latest draw each morning. No other person is permitted to touch the draw.
- Stewards and officials will be encouraged to provide their own pens for the purpose of marking the draw.
- Stewards will be provided with non-porous (plastic) working tables and chairs that can be easily wiped down.
- No spectators will be permitted in the warm-up areas under any circumstances.

### Judges and scribes

- There is no sharing of equipment or direct personal contact during dressage events.
- Judges and scribes will be provided with hand sanitiser, gloves, wipes and facemasks. There will be rubbish bags for immediate disposal of used consumables.
- Scoring will be online to minimise paper contact.
- Judges are encouraged to bring a family member to scribe for them where possible.
- Judges will be provided with one tablet that is theirs for the day.
- When tablets are returned to the scoring room by a scribe they will be marked with a red sticker. Once the tablets and stylus have been wiped down by a nominated COVID compliance officer they will be marked with a green sticker deeming them ready for re-use.
- As much as possible only one scribe per judge and tablet will be used each day.
- A laminated copy of each test will be available for the judge to use as a follow along sheet. Otherwise, judges may print out and bring their own paper copy for personal use only.
- Only the scribe is to handle the draw. Where more than one scribe per judge is used each scribe will be provided with their own copy of the draw.
- Judges are encouraged to bring their own bells. Where bells are required to be shared they will be cleaned and sanitised between classes.





## Queensland Youth & Pony Dressage Championships COVID-19 Safe Implementation Plan

---

### Trade village and food vendors

- Will be encouraged to be cashless and require a COVID Safe Plan. ie contactless payments or ordering and payment online.
- Have single entry and exit points.
- Customers outside marquees will be encouraged to maintain social distance of 1.5m.
- Vendors to wipe down contactless payment devices regularly.
- Encourage customers to only touch products if essential to their purchase. Encourage visual inspection.
- Provide sanitisers to encourage customers to sanitise their hands before and after touching products.
- Vendors are encouraged to wear gloves.

### Open Village Green

- BYO seat encouraged
- Frequent sanitisation of tables and chairs

### Drinking taps and fountains

- Drinking taps and fountains will be turned off.
- All attendees will be encouraged to provide their own clearly distinguishable water bottles for personal use only.
- Single use water bottles will be provided and must be disposed of after use. Attendees be encouraged to clearly label their bottles to avoid cross-sharing. If in doubt, attendees should dispose of single-use water bottles and obtain a new one.

### Deliveries

- Deliveries will be restricted to the trade village area and the stable areas for feed. Delivery of good will be contactless – eg smartphone photos with record of date and time instead of signatures.

### Spectators

- There is no sharing of equipment or direct personal contact during dressage events.
- Attendees must adhere to current social distancing guidelines.

### Ringside seating, official's meals, volunteer meals and functions

- All food and drinks will be served in individual portions in disposable containers.
- There will be a single server person handing portions to patrons – patrons will not be permitted to serve themselves.
- Patrons are required to dispose of all food containers themselves.



## Queensland Youth & Pony Dressage Championships COVID-19 Safe Implementation Plan

---

### Hand sanitiser

- Will be provided in common areas eg trade display village, and village green where food and goods are available.
- Hand sanitiser will be provided in stable /yard areas, in the event office and on official steward's tables.

### Cleaning of amenities

- Amenities will be cleaned throughout the day by QSEC staff

### Cleaning of tables in common areas

- Tables and chairs will be cleaned throughout the day by QSEC staff

## **4. Maintaining social distancing - compliance**

Social distancing will be maintained between riders, officials, volunteers and spectators at all times. The stable and camping area will be regularly monitored by the Stable Warden, COVID Officer, Volunteers, Security and Event Personnel. The competition areas will be regularly monitored by Stewards, the COVID Officer and Event Personnel. The spectator areas and trade village will be regularly monitored by QSEC staff, Volunteers, Security, the COVID Officer and Event Personnel. It will be a condition of entry to the venue that all attendees, in whatever role, adhere to social distancing requirements. Attendees who are disrespectful or refuse to follow social distancing guidelines may be asked to leave the venue.

### Stable area

- Signage will be prominently displayed, and the following actions will be undertaken to avoid potential congestion:
  - Day and overnight stables – keep left with signed and designated entry and exit points.
  - Amenities (toilets and showers) – encourage staggered use of showers, adjacent to camping areas.
- Riders and entourage will be limited to persons essential to the rider's participation in the event only

### General public areas

- Signage will be prominently displayed, and the following actions will be undertaken to avoid potential congestion:
  - Designated pedestrian traffic flow through the trade village with clear entry and exit points
  - All food will be served as take away food using disposable and recyclable utensils, paper bags, serviettes etc.
- Signage will include reminders about:
  - Social distancing



## Queensland Youth & Pony Dressage Championships COVID-19 Safe Implementation Plan

---

- Hand washing
- Results will be available online which will avoid the need for crowding around scoreboards.

### **Communicating for COVID-19 Safety**

#### Point of Competition entry

- All riders will be informed of the conditions of entry on the Nominate entry form.
- By entering this event riders are agreeing to abide by Government, Sporting and Event COVID Restrictions at the time of the event.

#### Prior to the event

- This COVID Safe Plan will be placed on the event website and a link sent to officials, riders, volunteers and trade vendors.

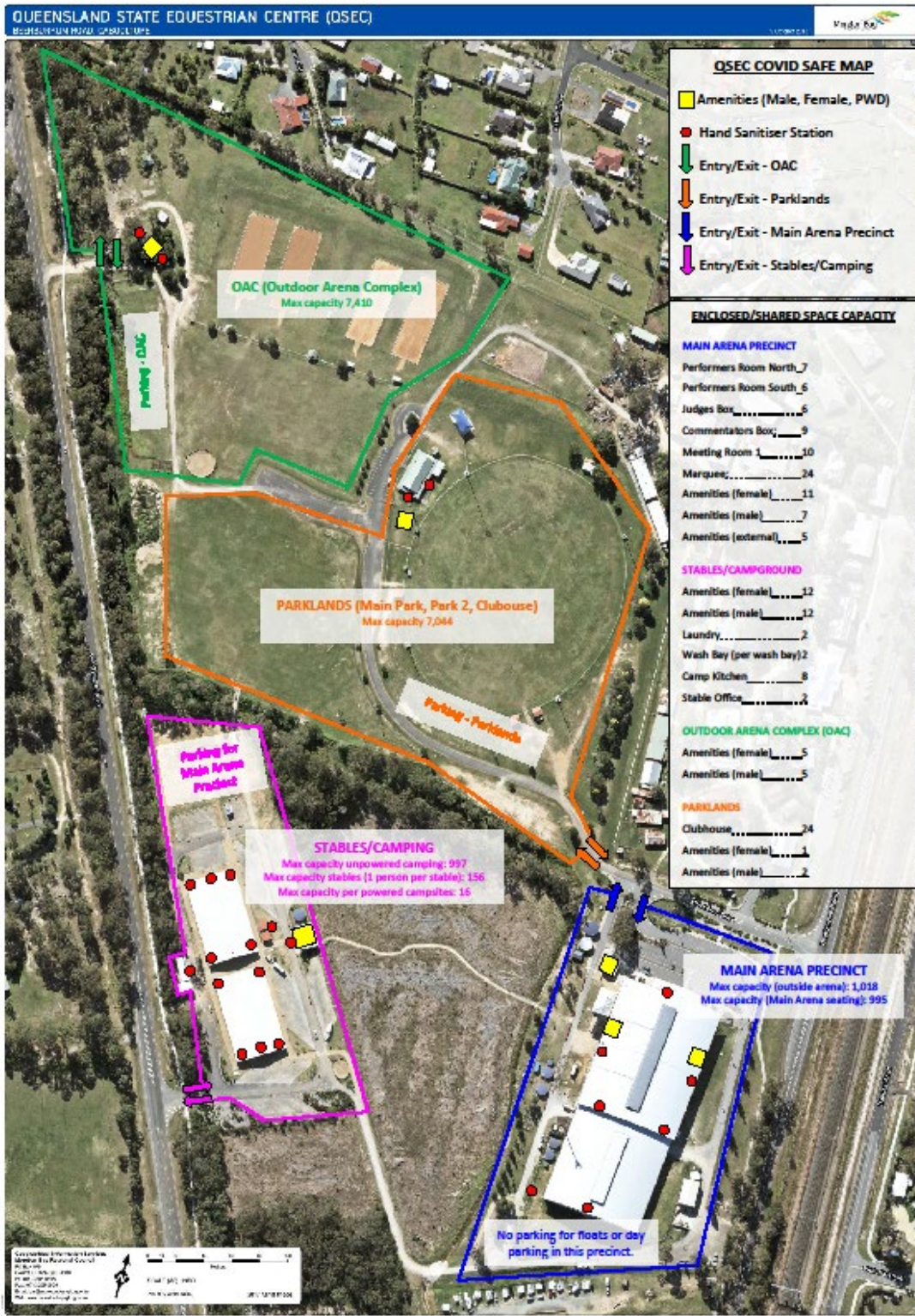
#### Throughout the event

- The QYPC Event Director, COVID Safety Officer or QSEC staff may ask a person/s who is not acting in a COVID-19 safe and responsible manner to leave the QSEC.
- Social distancing and hand hygiene signage will be at the entry points, common areas, trade village, village green.





# Queensland Youth & Pony Dressage Championships COVID-19 Safe Implementation Plan





## Queensland Youth & Pony Dressage Championships COVID-19 Safe Implementation Plan

### Appendices:

Signage to be printed with EQ logos (as per Australian Government policy) and laminated.

Industry Framework for COVID-safe events in Queensland

[https://www.covid19.qld.gov.au/\\_data/assets/pdf\\_file/0018/132570/industry-framework-covid-safe-events.pdf](https://www.covid19.qld.gov.au/_data/assets/pdf_file/0018/132570/industry-framework-covid-safe-events.pdf)

Outdoor Team Sports

[https://www.covid19.qld.gov.au/\\_data/assets/pdf\\_file/0010/130204/industry-covid-safe-outdoor-sports.pdf](https://www.covid19.qld.gov.au/_data/assets/pdf_file/0010/130204/industry-covid-safe-outdoor-sports.pdf)

QPWS Campgrounds

[https://www.covid19.qld.gov.au/\\_data/assets/pdf\\_file/0029/129926/Industry-COVID-SAFE-Plan-QPWS-Campgrounds.pdf](https://www.covid19.qld.gov.au/_data/assets/pdf_file/0029/129926/Industry-COVID-SAFE-Plan-QPWS-Campgrounds.pdf)

Help us keep Everyone Safe from COVID-19

[https://www.health.qld.gov.au/\\_data/assets/pdf\\_file/0041/949379/COVID19-visitor-poster.pdf](https://www.health.qld.gov.au/_data/assets/pdf_file/0041/949379/COVID19-visitor-poster.pdf)

Simple Steps to Help Stop the Spread

<https://www.health.gov.au/resources/publications/coronavirus-covid-19-print-ads-simple-steps-to-stop-the-spread>

Good hygiene is in your hands

<https://www.health.gov.au/resources/publications/coronavirus-covid-19-print-ads-good-hygiene-is-in-your-hands>

Six steps to successful everyday hand washing

[https://www.qld.gov.au/\\_data/assets/pdf\\_file/0031/127696/6-Steps-Hand-Washing-Poster.pdf](https://www.qld.gov.au/_data/assets/pdf_file/0031/127696/6-Steps-Hand-Washing-Poster.pdf)

Queensland Government checklist for bars and cafes

[https://www.covid19.qld.gov.au/\\_data/assets/pdf\\_file/0020/127235/COVID-Safe-Checklist-RestCafes.pdf](https://www.covid19.qld.gov.au/_data/assets/pdf_file/0020/127235/COVID-Safe-Checklist-RestCafes.pdf)

*Thank you for social distancing*