



September 15 to 18
2021

COVID-19 Safe Implementation Plan

Brisbane CDI

Queensland State Dressage Championships





Contents



Key contacts

Statement

Approved

Intent of this plan

- site registration/recording contact details of individuals who enter the QSEC site,
- signage and hygiene measures at all entry and exit points,
- management and separation of groups in competition and warm-up spaces/zones
- avoiding direct physical contact and sharing of equipment
- maintaining social distancing in common areas including signage and hygiene,
- communicating for safety, prior to and during the event
- review and monitoring of COVID Safe conditions throughout the event.



Brisbane CDI Queensland State Dressage Championships COVID-19 Safe Implementation Plan

Scope

This Plan applies to all riders, officials, volunteers, sponsors, supporters and members of the public participating in the SaddleFitter CDI event held at the Queensland State Equestrian Centre (QSEC) on 15 to 18 September 2021.

The Plan should be read in conjunction with the Outdoor Sports Industry approved plan and QSEC Site Map.

Principles

Four guiding principles provide the basis for implementing and maintaining COVID-19 safety of all at the Saddlefitter Brisbane CDI event:

- **Leadership** and governance to implement communication strategies, safety systems and processes.
- **Accountability** to set up and maintain systems and processes to support effective social distancing, hygiene, and registration.
- **Transparency/Clarity** to have clear roles, responsibilities, and clear procedures for making and communicating decisions related to COVID-19 safety.
- **Efficiency** to ensure the appropriate use of signage and social media for communicating safety and best practice and use of signage and resources to achieve communicating for safety.





Spectators

All spectators to:

at:

Compliance at entry and exit points will be monitored by volunteers and security. There will be hand sanitiser stations set up around the venue for spectators and signage reminding spectators to socially distance and maintain hygiene.

Spectator entry will be via

Conditions of entry to the event will be on the:

Conditions of entry are:

- fever
- cold or flu like symptoms, even if mild (cough, sore throat, shortness of breath)
- returned from overseas in the last 14 days, or
- been in close contact with a confirmed case of COVID-19 (coronavirus) in the last 14 days.



Brisbane CDI Queensland State Dressage Championships COVID-19 Safe Implementation Plan

3. Avoiding Direct Physical Contact and Sharing of Equipment

Stable area

- There is no sharing of equipment or direct personal contact during dressage events.
- Attendees must adhere to social distancing guidelines (1.5m distance or one person per 4m²).
- Hand sanitiser will be available at the gate and riders and grooms must sanitise their hands when touching the gate.
- Horse Health Declarations must be provided electronically. They are to be emailed to the Stable Co-ordinator the morning of arrival. On electronic receipt of the Horse Health Declaration the Stable Co-ordinator will unlock the stables.
- Professional groom or braiders must wear disposable gloves and sanitise all equipment between each horse and maintain social distancing at all times.
- Camp-kitchen in stable complex – BYO utensils.
- Riders, grooms and essential persons should adhere to family grouping restrictions and not gather within trucks or floats that are not part of their camping unit. Gathering outside of trucks is permitted so long as social distancing (1.5m) is maintained and BYO chairs and utensils.
- Regular compliance checks of the stable area will be made by The COVID Officer, Stable Warden, Stewards and Event Personnel. We ask that riders and essential entourage be understanding and compliant in any requests to maintain social distancing. Riders that are not respectful or continue to break the rules may be asked to leave the venue.
- There is adequate signage around the venue advising attendees of maximum numbers of persons permitted in each area. These must be adhered to.
- Only persons directly connected to a horse (rider or nominated groom) and the stable warden may enter a horse's stable or touch its stable door.
- Where possible, riders are encouraged to use their own camping amenities and avoid using QSEC amenities.

Day parking at Barr Oval

- There is no sharing of equipment or direct personal contact during dressage events.
- Attendees must adhere to social distancing guidelines (1.5m distance or one person per 4m²).
- Rider must notify the Event Director if they intend to day park at Barr Oval rather than using the stable complex.
- Hand sanitiser will be available at the gate and riders and grooms must sanitise their hands when touching the gate.
- No spectators will be permitted to enter through this gate.
- Horse Health Declarations must be provided electronically. They are to be emailed to the Stable Co-ordinator the morning of arrival with a note that the rider is day parking at Barr Oval. Gear check stewards will be notified of riders who have submitted health



Brisbane CDI Queensland State Dressage Championships COVID-19 Safe Implementation Plan

declarations. Riders will not be permitted to compete until their Health Declaration is received.

Competition arenas

- There is no sharing of equipment or direct personal contact during dressage events. However, veterinarians, the official technical delegate and stewards (wear bright yellow EA jackets) may touch horses and equipment.
- It is the usual practice of veterinarians and officials to use disposable gloves and immediately discard them after touching an individual horse or equipment, and this practice will be maintained. Gloves, masks, wipes and hand sanitiser will be available at all steward stations. There will be rubbish bags available for easy disposal of consumables.
- The steward's areas at each warm-up will be cordoned off. No rider, groom, spectator or support crew will be permitted in the steward's area.
- Stewards will be provided with their own clearly marked copy of the latest draw each morning. No other person is permitted to touch the draw.
- Stewards and officials will be encouraged to provide their own pens for the purpose of marking the draw.
- Stewards will be provided with non-porous (plastic) working tables and chairs that can be easily wiped down.
- No spectators will be permitted in the warm-up areas under any circumstances.
- One groom, coach or family member may observe the rider from outside the warm-up area. All other support crew (owners, additional family) will not be permitted.

Judges and scribes

- There is no sharing of equipment or direct personal contact during dressage events.
- Judges and scribes will be provided with hand sanitiser, gloves, wipes and facemasks. There will be rubbish bags for immediate disposal of used consumables.
- Scoring will be online to minimise paper contact.
- In the event paper scoring is required (tablet failure/freestyles), the scribe MUST wear gloves and change the gloves after every five horses.
- Judges are encouraged to bring a family member to scribe for them where possible.
- Judges will be encouraged to provide their own tablet or stylus. Scribes will be provided with one tablet.
- When tablets are returned to the scoring room by a scribe they will be marked with a red sticker. Once the tablets and stylus have been wiped down by a nominated COVID compliance officer they will be marked with a green sticker deeming them ready for re-use.
- As much as possible only one scribe per judge and tablet will be used each day.
- A laminated copy of each test will be available for the judge to use as a follow along sheet. Otherwise judges may print out and bring their own paper copy for personal use only.



- Only the scribe is to handle the draw. Where more than one scribe per judge is used each scribe will be provided with their own copy of the draw.
- Where judging takes place in a car, scribes may sit in the back seat.
- No sit in's from judge candidates will be permitted at this event.
- Judges and scribes will not be provided with cushions and blankets and will be encouraged to bring their own.
- Judges are encouraged to bring their own bells. Where bells are required to be shared they will be cleaned and sanitised between classes.

- Will be encouraged to be cashless and require a COVID Safe Plan. ie contactless payments or ordering and payment online.
- Only one person per 4m² inside marquees. For the Riders Marquee this equates to a maximum of 24 people at a time.
- Have single entry and exit points.
- Customers outside marquees will be required to maintain 1.5m distance.
- Vendors to wipe down contactless payment devices after each transaction.
- Encourage customers to only touch products if essential to their purchase. Encourage visual inspection.
- Provide sanitisers to encourage customers to sanitise their hands before and after touching products.
- Vendors are encouraged to wear gloves.
- Floor markings should be placed where appropriate to identify 1.5m distance between people queuing.

- BYO seat encouraged
- Frequent sanitisation of tables and chairs

- Drinking taps and fountains will be turned off.
- All attendees will be encouraged to provide their own clearly distinguishable water bottles for personal use only.
- Single use water bottles will be provided and must be disposed of after use. Attendees be encouraged to clearly label their bottles to avoid cross-sharing. If in doubt, attendees should dispose of single-use water bottles and obtain a new one.

- Deliveries will be restricted to the trade village area and the stable areas for feed. Delivery of good will be contactless – eg smartphone photos with record of date and time instead of signatures.



Brisbane CDI Queensland State Dressage Championships COVID-19 Safe Implementation Plan

Outdoor arena seating:

- 100 percent capacity with social distancing between family groups to be maintained (as per rugby and AFL).

Indoor arena seating

- 1 person per 2 square meters with social distancing between family groups to be maintained (as per rugby and AFL).
- The eastern aspect of the venue (adjacent to Beerburum Dr) will be cordoned off to public to minimise surface cleaning requirements.

Communicating for COVID-19 Safety

Point of Competition entry

- All riders will be informed of the conditions of entry on the Nominate entry form.
- All registered riders are encouraged to download the Australian COVID SAFE app.

Prior to the event

- The CDI Event Director or delegate will email all officials a copy of this plan, one to two weeks before the commencement of the Event.
- The CDI Event Director or delegate will email all sponsors with a copy of this plan, one to two weeks before the commencement of the Event.
- The CDI Volunteers Coordinator will email all volunteers one week before the event and will be available to brief volunteers as required throughout the event, should any queries arise.

Throughout the event

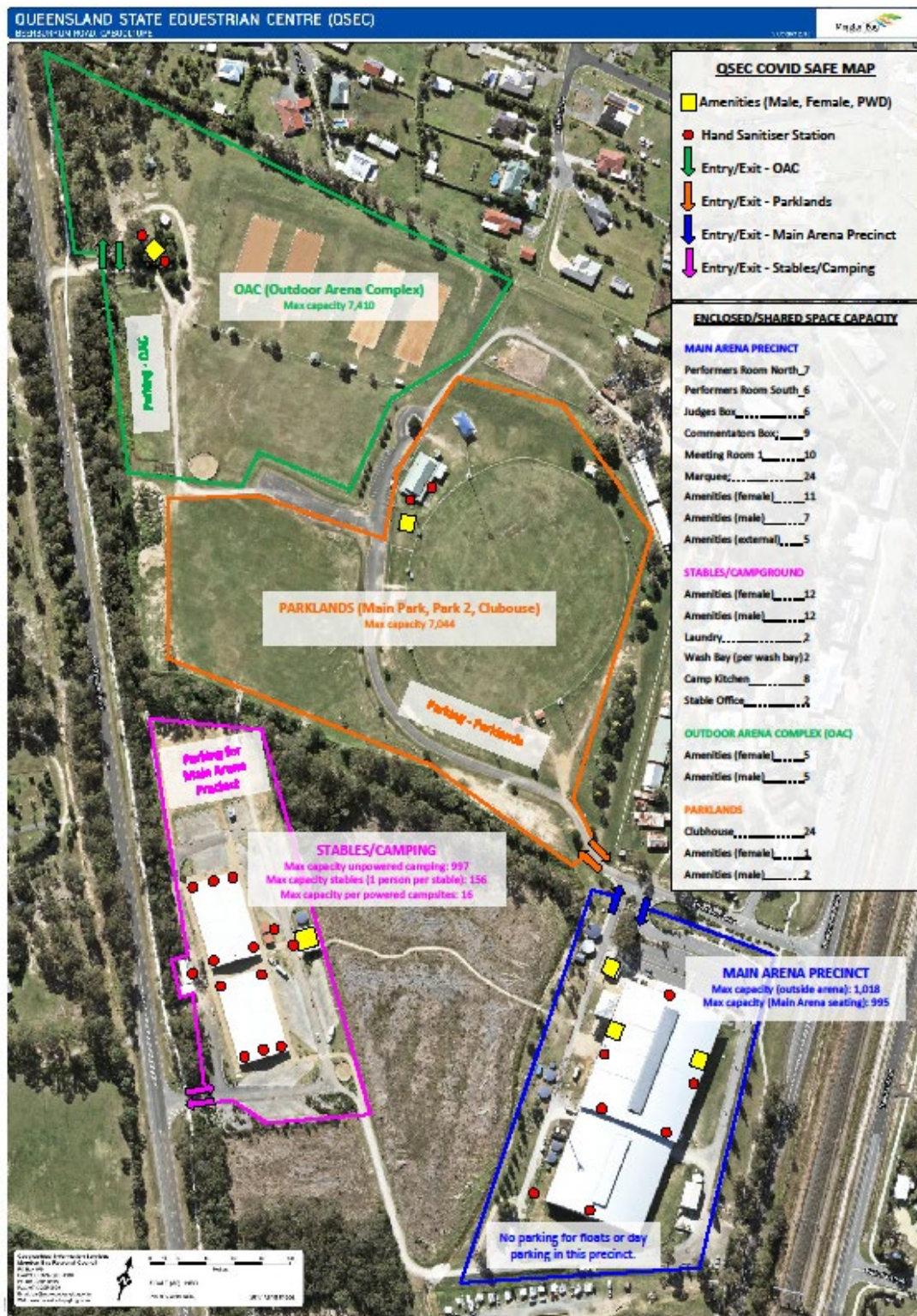
- The CDI Event Director, COVID Safety Officer or QSEC staff may ask a person/s who is not acting in a COVID-19 safe and responsible manner to leave the QSEC.
- The Sponsorship and Media Officer will post regular messaging regarding social distancing and hand hygiene on the Saddlefitter Brisbane CDI Facebook page prior to and throughout the event.
- Social distancing and hand hygiene signage will be at the entry points, common areas, trade village, village green.

5. Monitoring of COVID safe conditions at the Event

- Throughout the event, three to five designated members of the organising committee will monitor potential congregating of people in common areas and may take action to restrict numbers of people in a designated area. The Event Director will also be notified of the issue and remediation.
- Official stewards will monitor social distancing in competition areas.
- The Stable Warden will monitor social distancing in stable areas.



Brisbane CDI Queensland State Dressage Championships COVID-19 Safe Implementation Plan





Appendices:

Industry Framework for COVID-safe events in Queensland

Outdoor Team Sports

QPWS Campgrounds

Help us keep Everyone Safe from COVID-19

Simple Steps to Help Stop the Spread

Good hygiene is in your hands

Six steps to successful everyday hand washing

Queensland Government checklist for bars and cafes

Thank you for social distancing