



THE PEACHESTER LODGE

Festival of Showjumping

20TH - 29TH JUNE 2025

QUEENSLAND STATE EQUESTRIAN CENTRE

PEACHESTER LODGE



RAISING EQUINE ATHLETES

Welcome to the 2025 Peachester Lodge

Festival of Showjumping

SEVEN DAYS OF SHOWJUMPING - OVER \$130,000 IN PRIZES

Featuring the \$20,000 PEACHESTER LODGE WORLD CUP QUALIFIER

Entries via Equipe: Open 7.00pm 02/06/2025 Close 7.00pm 12/06/2025, unless at capacity earlier

FOSJ Team 2025

Judges

Michael Archer - Jan Golding - Lyndal Roos
Victor Tsang - Christine Bradfield - Haley Somerset - Tracey Cameron

Course Designers

David Sheppard: Arena One 26-29th June, Arena Two 20-22nd June
Gavin Chester: Arena One 20-22nd June, Arena Two 26-29th June
Rebecca Henry: Arena 3 20-29th June

Assistant Course Designers

Terri Langdon - Ian Chalmers - David Strathdee
Ian Hamilton - Elsie Richards

FEI Stewards

Bronwyn Hew - Arsalan Ansari - Meredith Barth
Jennifer Smith - Andrea Webb

President of the Ground Jury

Michael Archer

Veterinary Team

Dr Janine Dwyer - Dr Monika Baffy - Dr Trent Raeburn - Dr Charlotte Baynham

Event Organising Committee

The Queensland Showjumping Club Inc.

President: Matt Wray Vice President: Carly Overton Treasurer: Ken Jensen
Majella Ney, Alison Ford, Sharryn Livingstone, Renee Nicholls

Media Team

Katie Mendl - Grace Overton

Announcing Team

Clint Rose - Luke Mellers

Arena Team

Co-Ordinator: Leanne Bruggerman
Belinda Munroe - Mia Craig
Arianne Hall - Sugarbag Equestrian
FOSJ Volunteers

YOUR

Festival of Showjumping

SOCIAL CALENDAR



Welcome BBQ

With thanks to the crew from **The Exchange Hotel Kilcoy**, catch up with your mates on Thursday evening at the Campground BBQ Hut for a tasty bite to eat and a cool drink. Get in early to collect your ticket in the Rider's Lucky Door Draw! RSVP on Equipe.

The Riders Cup Soiree

The *Riders Cup* Soiree - a casual function on Sunday 22nd for all of our valued sponsors with a variety of platter food in the **Howden Insurance VIP Marquee**.

World Cup VIP Function

The best seat in the house! Our major sponsors and VIPs will enjoy FOSJ in style in the **Howden Insurance** VIP Marquee. From raised seating arena side for lunch & drinks from the VIP Bar, sit back and watch the World Cup feature class, make things interesting by having a punt in our famously fun Calcutta, enjoy a 'Dogs in the Movies' session from Australia's leading animal trainer Heidi Mackay & cheer on the Corporate Teams in the Bates Saddles Speed Challenge. *Only a Limited number of tickets will go on sale for purchase.

World Cup Afterparty

Bought to you by the "**Friends of FOSJ**" Feed up early and join us for some fun and tunes with the sensational *Wolfie* playing from 5pm in the FOSJ Trade Village. QSEC Bar & Food Trucks will be open... forget the dishes and let your hair down!

FOSJ Mega Raffle



Bates Saddle of your choice - valued up to \$6195 !

SCAN here or

[Click here for link to Raffle](#)

Veredus boots, Carbon Gel Vento & Pro Jump Active - valued at \$830

Terri Trivett Art hand drawn portrait - valued at \$500

\$20 each

Quast Metal pair of cavaletti ends - valued at \$110

or 3 for \$50



FRIDAY 20TH JUNE



Ring 1 - Pelican Waters Arena

CLASS 1 **1.20m Open** Article 238.2.1
Entry \$40 ***Sponsored by Kilcoy Exchange Hotel***

Total Prizemoney - \$1250

1st \$350 2nd \$275 3rd \$200 4th \$150
5th \$100 6th \$75 7th \$50 8th \$50
\$200 Peachester Lodge bonus for leading OTT

CLASS 2 **1.35m Open** Article 274.2.5
Entry \$50 ***Sponsored by Orangeville Sport Horses***

Total Prizemoney - \$2000

1st \$500 2nd \$430 3rd \$340 4th \$250
5th \$180 6th \$120 7th \$100 8th \$80

CLASS 3 **1.45m Open** Article 274.2.5
Entry \$60 ***Sponsored by Kilcoy Rural***

Total Prizemoney - \$2500

1st \$700 2nd \$550 3rd \$400 4th \$300
5th \$200 6th \$150 7th \$100 8th \$100



Ring 2 - Black Diamond Construction Arena



CLASS 4 **1.05m Open** Article 238.2.1
Entry \$30 ***Sponsored by CQ Timber and Steel***

Total Prizemoney - \$600

1st \$140 2nd \$120 3rd \$100 4th \$80
5th \$60 6th \$40 7th \$30 8th \$30

CLASS 5 **1.15m Open** Article 238.2.1
Entry \$30 ***Sponsored by TRH Equine Vets***

Total Prizemoney - \$800

1st \$250 2nd \$180 3rd \$130 4th \$80
5th \$50 6th \$40 7th \$35 8th \$35



Ring 3 - Queensland Family Pools & Spas Arena



Two starts are permitted in Ring 3 20/6/25

CLASS 6 **80cm Open** Article 238.2.1
Entry \$25 ***Sponsored by Cooroy Landscape Supplies***

Total Prizemoney - \$200

1st \$50 2nd \$40 3rd \$30 4th \$25
5th \$20 6th \$15 7th \$10 8th \$10

CLASS 7 **90cm Open** Article 238.2.1
Entry \$25 ***Sponsored by Z Equine Supplies***

Total Prizemoney - \$300

1st \$70 2nd \$60 3rd \$50 4th \$30
5th \$25 6th \$25 7th \$20 8th \$20

\$200 Peachester Lodge bonus for leading OTT

FOSJ EVENT LIVESTREAM 26-29th JUNE

proudly brought to you by...





CASTAWAYS POCKET

BY PELICAN WATERS

NEW WATERFRONT RELEASE



A MAGIC PLACE TO LIVE

- Emerging Dockside Village featuring a gourmet food focussed IGA
- Shopping Village with Coles and Woolworths & Waterfront Tavern
- Soon to be developed Marina Village
- Pelican Waters Resort
- Greg Norman Designed Golf Course
- Oaktree Retirement Village and Rockpool Aged Care
- Independent Private School and Public Schools nearby
- One Hour North of Brisbane CBD and International Airport
- 30 Minutes South of Sunshine Coast Airport
- Minutes to 7 incredible beaches
- On the doorstep of a boaties playground - The Pumicestone Passage



CASTAWAYS POCKET

BY PELICANWATERS



NAUTICAL EDGE

BY PELICAN WATERS

Pelican Waters has commenced its final stage of development so now is the time to invest in a waterfront lifestyle like no other.

An exclusive address, Castaways Pocket now offers a premium selection of ocean access home sites with a range of sizes and widths enabling you to build your waterfront paradise.

With amenities such as the fully functioning marina facility, emerging marina village, waterfront tavern and range of shopping options, an abundance of parks, open spaces and walkable foreshores, Pelican Waters offers you a lifestyle destination you can enjoy forever.

With convenience top of mind and access throughout the estate never easier, there are now only few limited opportunities remaining.

PELICAN WATERS LAND SALES SUITE

Where:

Corner Coral Sea Drive & Arlington Drive, Pelican Waters

Sales Contact:

Morgan Bonanno 0426 240 293 & Cat Miller 0439 312 395

Opening Hours:

Monday to Friday 8:30am – 5pm

Saturday & Sunday 10am – 4pm

Call 07 5492 4888

sales@pelicanwaters.com

pelicanwaters.com





SATURDAY 21ST JUNE

Ring 1 - Pelican Waters Arena



CLASS 8 **1.30m Open** Article 238.2.1
Entry \$50 ***Sponsored by Divas Beverages***

Total Prizemoney - \$1500
1st \$400 2nd \$320 3rd \$250 4th \$180
5th \$120 6th \$100 7th \$70 8th \$60

CLASS 9 **1.40m Open** Article 238.2.1
Sponsored by Martin Collins Australia

Total Prizemoney - \$2500
1st \$700 2nd \$550 3rd \$400 4th \$300
5th \$200 6th \$150 7th \$100 8th \$100

CLASS 10 **Junior Tour Round 1** Article 274.2.5
Entry \$40 ***Sponsored by Southern Cross Event Hire***

Total Prizemoney - \$1250
1st \$350 2nd \$275 3rd \$200 4th \$150
5th \$100 6th \$75 7th \$50 8th \$50



Ring 2 - Black Diamond Construction Arena



CLASS 11a **1.10m 6yo horses & under** Article 274.2.5
Entry \$30 ***Sponsored by Dupe Equine***

Total Prizemoney - \$600
1st \$140 2nd \$120 3rd \$100 4th \$80
5th \$60 6th \$40 7th \$30 8th \$30

CLASS 11b **1.10m Open** Article 274.2.5
Entry \$30 ***Sponsored by Aspire Tower Cranes***

Total Prizemoney - \$600
1st \$140 2nd \$120 3rd \$100 4th \$80
5th \$60 6th \$40 7th \$30 8th \$30

CLASS 11c **1.10m TSHA** Article 274.2.5
Entry \$30 ***Sponsored by Peachester Lodge***

Total Prizemoney - \$600 + Rug
1st \$140 2nd \$120 3rd \$100 4th \$80
5th \$60 6th \$40 7th \$30 8th \$30

CLASS 12a **1.20m 8yo horses & under** Article 274.2.5
Entry \$30 ***Sponsored by AJG Gallagher***

Total Prizemoney - \$800
1st \$250 2nd \$180 3rd \$130 4th \$80
5th \$50 6th \$40 7th \$35 8th \$35

CLASS 12b **1.20m Open** Article 274.2.5
Entry \$30 ***Sponsored by Simone Sorenson Equine Pulse***

Total Prizemoney - \$800
1st \$250 2nd \$180 3rd \$130 4th \$80
5th \$50 6th \$40 7th \$35 8th \$35

CLASS 12c **1.20m TSHA** Article 274.2.5
Entry \$30 ***Sponsored by Peachester Lodge***

Total Prizemoney - \$800 + Rug
1st \$250 2nd \$180 3rd \$130 4th \$80
5th \$50 6th \$40 7th \$35 8th \$35



Ring 3 - Queensland Family Pools & Spas Arena



CLASS 13a **90cm Open** Article 274.2.5
Entry \$20 ***Sponsored by Kidmans Camp***

Total Prizemoney - \$300
1st \$70 2nd \$60 3rd \$50 4th \$30
5th \$25 6th \$25 7th \$20 8th \$20

CLASS 13b **90cm QSJC Members** Article 274.2.5
Entry \$25 ***Sponsored by Healey Racing***

Total Prizemoney - \$400
1st \$90 2nd \$70 3rd \$60 4th \$50
5th \$40 6th \$30 7th \$30 8th \$30

CLASS 14 **1.00m Open** Article 274.2.5
Entry \$25 ***Sponsored by Macalister Milk***

Total Prizemoney - \$400
1st \$90 2nd \$70 3rd \$60 4th \$50
5th \$40 6th \$30 7th \$30 8th \$30
\$200 Peachester Lodge bonus for leading OTT



Howden Equine

Previously known as HQ Insurance and Silks Insurance, Howden Equine is a specialist equine insurance brokerage offering market leading service with cover options to suit your high level performance horses and breeding prospects.

If you are after a quote and want to find out more information, see Maggie in the Howden Equine marquee or head to their website.

Performance Horse Insurance:

- Mortality
- Agreed Value
- Renewal Extension
- Transit Aus/NZ

Additional Extras:

- Life Saving Surgery
- Loss of Use
- Stallion Cover
- Prospective Foal

Contact Maggie Johnston

M +61 499 937 902

E maggie.johnston@howdengroup.com

HOWDEN

howdeninsurance.com.au

Copyright © 2024 Howden Insurance Brokers (Australia) Pty Ltd. Howden Insurance Brokers (Australia) Pty Ltd (ABN 79 644 885 389 | AFSL 539613), AlphaXO Risk Partners Pty Limited (ABN 29 162 902 678 | AFSL 496025) and Howden Equine Pty Ltd (ABN 46 091 731 225 | AFSL 235666) are part of Howden Pacific Holdings Pty Ltd which is owned by Howden Broking Group Limited (UK). Silks Insurance Pty Ltd (ABN 15 639 058 718), is also part of the Howden Broking Group Limited and operates as an Authorised Representative (AR 1280952) of Howden Equine Pty Ltd. Any advice or recommendations are general in nature and do not take into account your individual objectives, financial situation or needs. Please read all relevant Policy Wordings, Product Disclosure Statements and any other information we provide before deciding if this is right for you.





SUNDAY 22ND JUNE

Ring 1 - Pelican Waters Arena



CLASS 15 **Ruby Tour Round 1** Article 238.2.1

Entry \$50 ***Sponsored by Turiya Farms***

Total Prizemoney - \$1750

1st \$450 2nd \$370 3rd \$300 4th \$220
5th \$150 6th \$100 7th \$90 8th \$70

CLASS 16 **1.30m Open** Article 238.2.1

Entry \$50 ***Sponsored by Washpool Lodge***

Total Prizemoney - \$1500

1st \$400 2nd \$320 3rd \$250 4th \$180
5th \$120 6th \$100 7th \$70 8th \$60

CLASS 17 **The Rider's Cup 1.45m** Article 238.2.2

Entry \$150 ***Sponsored by Genelite***

Total Prizemoney - \$10,000 + Rug & Garland

1st \$3000 2nd \$2200 3rd \$1400 4th \$1000 5th \$750
6th \$500 7th \$400 8th \$300 9th \$250 10th \$200
Winner will receive a **Equilume** Pro Mask - rrp \$840



Ring 2 - Black Diamond Construction Arena



CLASS 18 **Emerald Tour Round 1** Article 274.2.5

Entry \$50 ***Sponsored by Fencing Solutions Qld***

Total Prizemoney - \$1500

1st \$400 2nd \$320 3rd \$250 4th \$180
5th \$120 6th \$100 7th \$70 8th \$60

CLASS 19 **Amateur Tour Round 1** Article 274.2.5

Entry \$40 ***Sponsored by WestVETS***

Total Prizemoney - \$1000

1st \$300 2nd \$220 3rd \$140 4th \$100
5th \$80 6th \$60 7th \$50 8th \$50

CLASS 20 **Childrens' Tour Round 1** Article 274.2.5

Entry \$40 ***Sponsored by Bretts Plants***

Total Prizemoney - \$750

1st \$170 2nd \$130 3rd \$100 4th \$90
5th \$80 6th \$70 7th \$60 8th \$50



Ring 3 - Queensland Family Pools & Spas Arena



CLASS 21a **1.05m Open** Article 238.2.1

Entry \$30 ***Sponsored by Equilume***

Total Prizemoney - \$600

1st \$140 2nd \$120 3rd \$100 4th \$80
5th \$60 6th \$40 7th \$30 8th \$30

CLASS 21b **Magic Millions OTT Qualifier** Article 238.2.2

Entry \$40 ***Sponsored by Redleaf Lodge***

Total Prizemoney - \$600

1st \$140 2nd \$120 3rd \$100 4th \$80
5th \$60 6th \$40 7th \$30 8th \$30

CLASS 22 **80cm Open** Article 238.2.1

Entry \$25 ***Sponsored by Mt Robinson Stud***

Total Prizemoney - \$200

1st \$50 2nd \$40 3rd \$30 4th \$25
5th \$20 6th \$15 7th \$10 8th \$10

CLASS 23 **90cm Open** Article 238.2.1

Entry \$25 ***Sponsored by Hampton & Harlow Equestrian***

Total Prizemoney - \$300

1st \$70 2nd \$60 3rd \$50 4th \$30
5th \$30 6th \$20 7th \$20 8th \$20



ON-SITE ENERGY SOLUTIONS

GENERATORS | CLEAN ENERGY | LIGHTING TOWERS | AIR COMPRESSORS | NEW & USED | SALES | RENTAL

As chosen by Sam Overton and Oaks Cassanova



Close.
Balanced.
Adjustable.



BATES VICTRIX

BATES
• SADDLES •





THURSDAY 26TH JUNE



Ring 1 - Pelican Waters Arena

Oaks Sport Horses Young Horse Gala Day

CLASS 24 **1.00m 4/5 YO horses** Article 238.1.1
Entry \$30 ***Sponsored by Oaks Sporthorses***

CLASS 25 **1.10m 5/6 YO horses** Article 238.2.2
Entry \$40 ***Sponsored by Oaks Sporthorses***

CLASS 26 **1.20m 6/7 YO horses** Article 238.2.2
Entry \$50 ***Sponsored by Oaks Sporthorses***



OAKS SPORT HORSES
SETTING THE STANDARD

Overall Style Awards for each class - Champion \$200 & Rug, Reserve Champion \$100

KEP Italia Overall Style Champion \$250 - Kersey Rug & Garland - KEP helmet (valued at \$1500)

Best Presented each class - \$250 Voucher from **Dupe Equine**

Total Prizemoney - \$1000

Clear rounds share prizepool

Total Prizemoney - \$1250 + Rug

1st \$350 2nd \$275 3rd \$200 4th \$150
5th \$100 6th \$75 7th \$50 8th \$50

Total Prizemoney - \$1500 + Rug

1st \$400 2nd \$320 3rd \$250 4th \$180
5th \$120 6th \$100 7th \$70 8th \$60

CLASS 27 **Rider's Choice 1.40m or 1.50m** Article 274.2.5
Entry \$50 ***Sponsored by Manuel Equine Transport***

Total Prizemoney - \$3000 + Rug

1st \$800 2nd \$650 3rd \$500 4th \$400
5th \$250 6th \$170 7th \$130 8th \$100

* Rider's Choice: Riders have the option to choose to jump 1.40m or 1.50m. Heights will be amended in the middle of the class.

Note: The height choice is yours, the class will be placed as a normal class based on the article 274.2.5



Ring 2 - Black Diamond Construction Arena



CLASS 28 **Junior Tour Round 2** Article 238.2.1
Entry \$40 ***Sponsored by Southern Cross Event Hire***

CLASS 29 **1.25m Open** Article 238.2.1
Entry \$40 ***Sponsored by Dependable Sheds***

CLASS 30 **Childrens' Tour Round 2** Article 238.2.2
Entry \$40 ***Sponsored by Hampton & Harlow Equestrian***

Total Prizemoney - \$1250

1st \$350 2nd \$275 3rd \$200 4th \$150
5th \$100 6th \$75 7th \$50 8th \$50

Total Prizemoney - \$1000

1st \$300 2nd \$220 3rd \$140 4th \$100
5th \$80 6th \$60 7th \$50 8th \$50

Total Prizemoney - \$750

1st \$170 2nd \$130 3rd \$100 4th \$90
5th \$80 6th \$70 7th \$60 8th \$50



Ring 3 - Queensland Family Pools & Spas Arena



CLASS 31 **80cm Open** Article 274.2.5
Entry \$25 ***Sponsored by Classic Treadmills***

CLASS 32a **90cm Open** Article 274.2.5
Entry \$25 ***Sponsored by Ethereal Equestrian***

CLASS 32b **90cm TSHA** Article 274.2.5
Entry \$25 ***Sponsored by TSHA***

CLASS 33 **1.10m Open** Article 238.2.1
Entry \$30 ***Sponsored by Kilcoy Exchange Hotel***

Total Prizemoney - \$200

\$200 Peachester Lodge OTT Bonus

Total Prizemoney - \$300

1st \$70 2nd \$60 3rd \$50 4th \$30
5th \$30 6th \$20 7th \$20 8th \$20

Total Prizemoney - \$300

1st \$70 2nd \$60 3rd \$50 4th \$30
5th \$30 6th \$20 7th \$20 8th \$20

Total Prizemoney - \$600

1st \$140 2nd \$120 3rd \$100 4th \$80
5th \$60 6th \$40 7th \$30 8th \$30

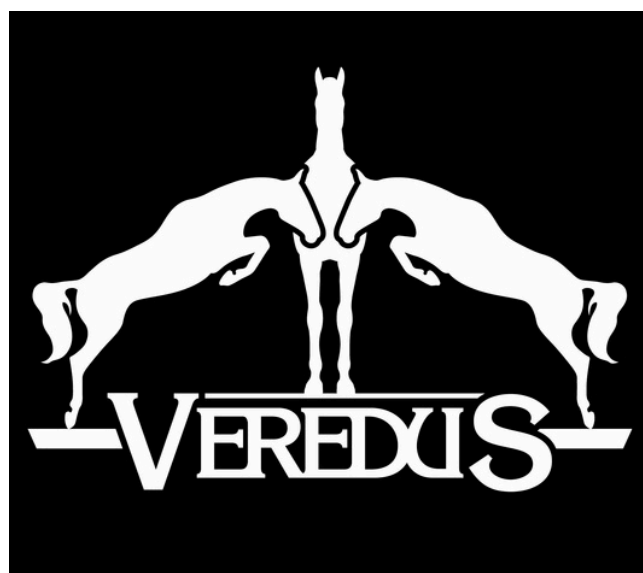
\$200 Peachester Lodge bonus for leading OTT




TOTI

FIND OUT MORE AT
WWW.TOTIEQUESTRIAN.COM

PARLANTI



KAP®
ITALIA

Superior Helmets



FRIDAY 27TH JUNE

Ring 1 - Pelican Waters Arena



CLASS 34 **Ruby Tour Round 2** Article 274.2.5

Entry \$50 ***Sponsored by Icepack***

Total Prizemoney - \$1750

1st \$450 2nd \$370 3rd \$300 4th \$220
5th \$150 6th \$100 7th \$90 8th \$70

CLASS 35 **1.30m Young Rider** Article 274.2.5

Entry \$60 ***Sponsored by Divas Beverages***

Total Prizemoney - \$2000

1st \$500 2nd \$430 3rd \$340 4th \$250
5th \$180 6th \$120 7th \$100 8th \$80

CLASS 36 **Rider's Choice 1.35m or 1.45m Open** Article 238.2.1

Entry \$60 ***Sponsored by GIA Scaffold***

Total Prizemoney - \$2000

1st \$500 2nd \$430 3rd \$340 4th \$250
5th \$180 6th \$120 7th \$100 8th \$80

* Rider's Choice: Riders have the option to choose to jump 1.35m or 1.45m. Heights will be amended in the middle of the class.

Note: The height choice is yours, the class will be placed as a normal class based on the article 274.2.5



Ring 2 - Black Diamond Construction Arena



CLASS 37 **Amateur Tour Round 2** Article 238.2.1

Entry \$40 ***Sponsored by WestVETS***

Total Prizemoney - \$1000

1st \$300 2nd \$220 3rd \$140 4th \$100
5th \$80 6th \$60 7th \$50 8th \$50

CLASS 38 **Emerald Tour Round 2** Article 238.2.1

Entry \$50 ***Sponsored by Double C Farms***

Total Prizemoney - \$1500

1st \$400 2nd \$320 3rd \$250 4th \$180
5th \$120 6th \$100 7th \$70 8th \$60



Ring 3 - Queensland Family Pools & Spas Arena



CLASS 39 **90cm Open** Article 238.2.1

Entry \$25 ***Sponsored by McAuliffe Mobile Repairs***

Total Prizemoney - \$300

1st \$70 2nd \$60 3rd \$50 4th \$30
5th \$30 6th \$20 7th \$20 8th \$20

CLASS 40 **1.00m Open** Article 274.2.5

Entry \$25 ***Sponsored by Kolora Lodge***

Total Prizemoney - \$400

1st \$90 2nd \$70 3rd \$60 4th \$50
5th \$40 6th \$30 7th \$30 8th \$30

CLASS 41 **1.10m Open** Article 274.2.5

Entry \$30 ***Sponsored by Z Equine supplies***

Total Prizemoney - \$700

1st \$160 2nd \$130 3rd \$100 4th \$80
5th \$70 6th \$60 7th \$50 8th \$50



WEST PEAK WARMBLOODS



Brilliant Disguise
Bueno Solaris son



West Peak Pericles
Totilas Grandson



FF Luciana
Calgary x Charlemagne Ego Z

TYPE - TEMPERAMENT - MOVEMENT - PEDIGREE - TALENT

Contact us about our Leg up Program 2025 - Ambassadorship

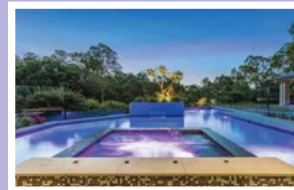
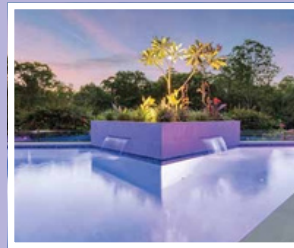
Email: craig@westpeakwarmbloods.com Ph 0413 411 746



Creating Lifestyles

At Queensland Family Pools & Spas we construct more than award winning concrete pools and spas – we create lifestyles.

- Brisbane's Leading Concrete pool builder
- Provide turn-key solutions, everything from Design, construction, landscape, fencing and pool servicing.
- Master Pool Builder
- We are currently building from Beenleigh to Noosa.



www.queenslandfamilypools.com.au

Phone: 07 2101 9424



FENCING SOLUTIONS QUEENSLAND



Built by horse people, for horse people, our fencing solutions are thoughtfully designed to meet the high standards of equine care. Whether you're prioritizing safety, strength, or visual appeal, we provide options that deliver peace of mind for both you and your horses.



Get in touch today to discuss your next project

Alan 0428281226 | Katie 0427250474

katiesmoll@hotmail.com

www.fencingsolutionsqld.com.au



Thankyou Z Equine for supplying the course of jumps for Arena 3.

If you are interested in purchasing equipment, contact Craig 0407597023





SATURDAY 28TH JUNE

Ring 1 - Pelican Waters Arena



CLASS 42 **Stal Tops Young Rider** Article 238.2.2

Entry \$70 ***Sponsored by Stal Tops & Toti***

Total Prizemoney - \$3,000 + Rug & Garland

1st \$800 2nd \$650 3rd \$500 4th \$400

5th \$250 6th \$170 7th \$130 8th \$100

Winner will also receive a prize from the **Toti** collection & caps for 1st - 6th

CLASS 43 **David Overton Memorial Cup** Article 238.2.2

Entry \$100 Future Stars - 1.30m

Sponsored by The Overton Family & Icepack

Total Prizemoney - \$5,000 + Rug & Garland

1st \$1,500 2nd \$1,100 3rd \$700 4th \$500 5th \$350

6th \$250 7th \$200 8th \$150 9th \$125 10th \$125

Winner will also receive The **David Overton Memorial Cup** &
Pair of custom **Parlanti** Passion Malibu Boots (Value \$1300)

CLASS 44 **Caboolture WORLD CUP Qualifier**

Entry \$375 ***Sponsored by***

Article 273.4.3b-W



PEACHESTER LODGE

Total Prizemoney - \$20,000 + Rug & Garland

1st \$5,000 2nd \$4,000 3rd \$3,000 4th \$2,000

5th \$1,400 6th \$1,100 7th \$800 8th \$700

9th \$600 10th \$500 11th \$450 12th \$450

Winner will also receive **The Bob Major Memorial Trophy** &
Hand drawn Portrait by **Terri Trivett** (Value \$500)

CLASS 45 **Bates Saddles Speed Classic** Article 263

Invitational Corporate Pairs 'Jigsaw'

Sponsored by Bates Saddles

Total Prizemoney - \$3,300 + Rugs winners

1st \$1,000 2nd \$800 3rd \$600

4th \$400 5th \$300 6th \$200



Ring 2 - Black Diamond Construction Arena



CLASS 46 **Amateur Tour Final** Article 238.2.2

Entry \$60 ***Sponsored by WestVETS***

Total Prizemoney - \$2000 + Rug & Garland

1st \$500 2nd \$430 3rd \$340 4th \$250

5th \$180 6th \$120 7th \$100 8th \$80

CLASS 47 **Childrens' Tour Final** Article 238.2.2

Entry \$60 ***Sponsored by Black Diamond Building & Construction***

Total Prizemoney - \$1,500 + Rug & Garland

1st \$400 2nd \$320 3rd \$250 4th \$180

5th \$120 6th \$100 7th \$70 8th \$60

Best Presented - gift pack from **Snaffle-It Horse Supplies**



Ring 3 - Queensland Family Pools & Spas Arena



CLASS 48a **1.00m Open** Article 238.2.1

Entry \$25 ***Sponsored by TFB Hire***

Total Prizemoney - \$400

1st \$90 2nd \$70 3rd \$60 4th \$50

5th \$40 6th \$30 7th \$30 8th \$30

CLASS 48b **1.00m TSHA** Article 238.2.1

Entry \$25 ***Sponsored by TSHA***

Total Prizemoney - \$400

1st \$90 2nd \$70 3rd \$60 4th \$50

5th \$40 6th \$30 7th \$30 8th \$30

CLASS 48c **1.00m QJSC Members Championships** Article 238.2.2

Entry \$25 ***Sponsored by John England Drainage***

Total Prizemoney - \$600 + Rug

1st \$150 2nd \$120 3rd \$100 4th \$80

5th \$50 6th \$40 7th \$30 8th \$30



Southern Cross Event Hire is the largest supplier of portable equine stabling and yarding in the Southern Hemisphere.

Established in 2005, our aim is to provide the very best in portable infrastructure for equestrian events across Australia. Catering for every event from International level to Pony Club.

Our experienced team will deliver, erect and dismantle stables to the grounds of your choice. Giving you the flexibility to hold your event where and when you choose.

Our stables are proudly manufactured in Australia.

Contact: Rachel Wessel: 0409331549
rachel@southerncrosseventhire.com.au

BLACK DIAMOND

BUILDING & CONSTRUCTION

Black Diamond Building & Construction are the experts when it comes to building quality tilt panel commercial premises. No matter the size, BDBC can design, manage and construct your entire project from concept to completion.

Let's build something great together.

 bdbc.com.au





SUNDAY 29TH JUNE

Ring 1 - Pelican Waters Arena



CLASS 49 **Junior Tour Final** Article 238.2.2
Entry \$60 ***Sponsored by Southern Cross Event Hire***

Total Prizemoney - \$2,000 + Rug & Garland

1st \$500 2nd \$430 3rd \$340 4th \$250
5th \$180 6th \$120 7th \$100 8th \$80

CLASS 50 **The Mini Prix** Article 238.2.2
Entry \$130 ***Sponsored by Magic Millions***

Total Prizemoney - \$8,000 + Rug & Garland

1st \$2,200 2nd \$1,700 3rd \$1,200 4th \$1,000
5th \$750 6th \$500 7th \$350 8th \$300

CLASS 51 **Ruby Tour Final** Article 238.2.2
Entry \$80 ***Sponsored by Tyrewise***

Total Prizemoney - \$4,000 + Rug, Garland

1st \$1000 2nd \$850 3rd \$700 4th \$550
5th \$400 6th \$250 7th \$150 8th \$100



Ring 2 - Black Diamond Construction Arena



CLASS 52a **Emerald Tour Open Final** Article 238.2.2
Entry \$70 ***Sponsored by CJR Group***

Total Prizemoney - \$3,000 + Rug & Garland

1st \$800 2nd \$650 3rd \$500 4th \$400
5th \$250 6th \$170 7th \$130 8th \$100

CLASS 52b **Emerald Tour Rising Stars Final** Article 238.2.2
Entry \$70 *For horses 8 years & under*
Sponsored by Westpeak Warmbloods

Total Prizemoney - \$3,000 + Rug & Garland

1st \$800 2nd \$650 3rd \$500 4th \$400
5th \$250 6th \$170 7th \$130 8th \$100



Ring 3 - Queensland Family Pools & Spas Arena



CLASS 53a **90cm QJWC Members Championships** Article 274.2.5
Entry \$25 ***Sponsored by Redleaf Lodge***

Total Prizemoney - \$400 + Rug

1st \$90 2nd \$70 3rd \$60 4th \$50
5th \$40 6th \$30 7th \$30 8th \$30

CLASS 53b **90cm Open** Article 274.2.5
Entry \$25 ***Sponsored by AJ Gallagher***

Total Prizemoney - \$300

1st \$70 2nd \$60 3rd \$50 4th \$30
5th \$25 6th \$25 7th \$20 8th \$20

CLASS 54a **1.05m Open** Article 274.2.5
Entry \$30 ***Sponsored by Finch Farm***

Total Prizemoney - \$700 + Rug

1st \$160 2nd \$130 3rd \$100 4th \$80
5th \$70 6th \$60 7th \$50 8th \$50

CLASS 54b **1.05m Horses 6yo & Under** Article 274.2.5
Entry \$30 ***Sponsored by Orangeville Sporthorses***

Total Prizemoney - \$700

1st \$160 2nd \$130 3rd \$100 4th \$80
5th \$70 6th \$60 7th \$50 8th \$50

Overall Tour Bonus Prizes

1st \$200 2nd \$100 3rd \$50

Emerald Open - Emerald YH - Ruby - Amateur - Childrens - Junior

Sponsored by Yandoo Park & James Mooney Equestrian



Sachi is life!



follow us @sachi8au

DIVAS
BEVERAGES



With over 30 years' experience in scaffolding, you can be assured we understand all facets of this industry and what it takes to build successful relationships with customers. At GIA Scaffold, we deliver the highest standards of Service, Quality, Safety and Reliability. From initial scope to completion, we assist the customer on achieving the most cost effective, efficient and safest scaffold solution for their project.

"Our company has been working with Phil for over 5 years, and we consider him one of our team". "Phil is a big contributor to the success of our projects".

Gardner Vaughn Group

phill@gias.com.au Ph 0468 857 286

Get the right



Pacific Fair Magic Millions Polo & Showjumping

Sunday 11th January 2026
Doug Jennings Park, Gold Coast





World Cup Competitors



CABOOLTURE
WORLD CUP

World Cup entries close | THURSDAY 12th June @ 7.00pm

World Cup Arrivals Inspection | FRIDAY 27th June @ 11:00am

World Cup Horse Inspection | SATURDAY 28th June @ 8:00am - 9:00am

Bob Major Memorial

Our World Cup class is held in honour of Mr Bob Major. Bob was involved with showjumping as an FEI judge for many decades. He was also member of the original Organising Committee for the Caboolture World Cup, and remained so for many years. We hope we are doing you proud Bob!

Arrivals

World Cup horses must be present on the grounds by **11.00am Friday 27th June**, and will be checked in by FEI Steward. *Arrival inspections* will take place between **11.00am-12.00pm**. The vet and steward will come to your stable. Please have your horse's passport, thermometer, a handler and horse ready.

Stabling

World Cup horses will be allocated stabling within the FEI designated area. Armbands for FEI riders and their groom/s and horse owner/s will be supplied on arrival. Armbands will be checked upon entry to FEI stabling.

Horse Inspection (Trot Up)

Trot up will take place at **8.00am Saturday 28th June** at the QSEC Stable Complex. Please be on time and ready with bridle numbers and passport. Stallions to present first please and then in bridle number order where possible.

Dress to Impress

Emcee Apparel has kindly donated a \$300 shopping voucher to the Best Presented Lady and Best Presented Gentleman handler and horse during the Horse Inspection.

Completely Equine has kindly donated a \$300 Voucher for Best Presented horse and rider in the World Cup class.

World Cup Winner Bonus

Terri Trivett Art has kindly donated a hand drawn portrait of your horse valued at \$500.



The 'GURU' Award

*Best Performed Grand Prix Horse at Festival of Showjumping 2025
from classes Open 1.45m, Riders Cup, 1.40/1.50m Riders Choice, World Cup*

Proudly donated
By Bruggemann & Smith Families



This award is in honour and memory of 'Guru' who against all odds was one of the countries most competitive Grand Prix Horses. Proudly bred owned by the Bruggemann & Smith Families and ridden by Clem Smith

Guru won many notable Grand Prix and Championship classes & awards throughout Australia. Some career highlights Leading Part One Horse Sydney Royal - David Asimus Medal, Bob Chittick Memorial Perpetual Cup, Winner Betty McVean Memorial, Runner Up Australian Senior Champion, Australian Speed Champion, Peter Hoffman Memorial, Three times Queensland Grand Prix Horse of the Year. Multiple Senior State & Country Titles and Leading Horse Awards.



CJR
GROUP
Concrete Construction

CJR Concrete Construction - Shed Slabs, Livestock Yards & Stable Slabs. We will prepare and deliver a slab for any application or location.

CJR Prefab Steel Sheds - specialises in all styles of steel sheds suitable for Stables, Garages, Storage.

Our services are available throughout the Tweed Heads, Gold Coast, Byron Bay, Ballina, Lismore area. Shed kits available Australia Wide.

cjrconcreteconstruction.com.au

Phone 0488409140

CLOPF® Fibre is an additive proven to improve the stability and structure of a sand installation. CLOPF Fibres allow the horse to work 'on top', rather than 'into' the surface.

The addition of CLOPF® Fibres can provide:

- Enhanced surface stability
- Improved performance
- Increased energy return
- Increased water retention

CLOPF® Fibres are:

- Excellent value for money
- Suitable for Indoor or outdoor use
- Proven competition surface
- Laboratory proven as environmentally sound

Contact the team at



0466 254 497



TyreWise
Sourcing **Supply** Support

TYRE & PUNCTURE REPAIRS
MECHANICAL
WHEEL ALIGNMENT
BALANCING & ROTATIONS
WHEELS & RIMS

WARANA | KUNDA PARK | FOREST GLEN
www.tyrewise.com.au
07 5493 7155



KUMHO
TYRES

Stabling & Camping

BLOCK FEES apply for all stable and camping bookings at QSEC

Arrivals from: Thursday 19th June 10.00am

Stables: \$420 permanent/\$380 portable

Powered Campsite: \$330

Departures by: Sunday 29th June by 6.00pm

Dressage Yards: \$200

BYO Yards: \$60/horse

- Stables will be allocated by the OC - with priority to our FEI riders, Sponsors, FOSJ committee & event volunteers.
- QSEC Stables and Camping must be booked on Equipe with your entries.
- All stables are subject to a \$80 Bond.
- Southern Cross portable stables must be left clean of manure & damage free.
- QSEC Permanent Stables must be left completely empty, and swept clean in order to receive bond back.
- Damage to stables: any costs from QSEC will be invoiced to the nominee. (Damaged panels are \$300ea)
- We strongly suggest that you familiarise yourself with the QSEC Stabling Conditions to ensure your bond return:
<https://www.qsec.com.au/files/assets/qsec/forms/camping-and-stable-rules.pdf>
- Dressage Yards, and adjacent area, must be left clean of manure & damage free.
- BYO Yards must be of solid construction, no electric tape yards permitted.
- BYO Yard and all campsite areas used must be left clean and tidy.
- Stable waste must be disposed of in designated areas only.
- **NO arrivals before Thursday 19th 10am.** If you would like to stay Sunday 29th, see extra charges on Equipe.
- Bonds, if applicable, will be returned to the credit card used to pay on Equipe within 2 weeks post event.
- Please use the wash bays available, horses are not to be hosed in any other area of the campgrounds.
- Please follow directions of our stable/camping manager Alison Ford Ph: 0419646737.

Overflow Stable Options

- Burpengary Equestrian Centre - burpengaryequestriancentre.com.au
- Caboolture Showground - is NOT available the first weekend, only available from 23/06/2025 onwards.
Bookings must be made directly with the Show Society. Ph 0438 077 711

QUEENSLAND STATE EQUESTRIAN CENTRE

By entering our event, you agree to obey by the following rules:

NO GLASS is permitted on the entire QSEC site - including stables and camping areas.

No BYO Alcohol permitted in or/around the Competition Arenas - including the areas surrounding (carpark included).

Dogs are permitted in the **campground area only**, provided they are kept on a lead and under control at all times.

NO dogs permitted in competition arenas or warm up areas.

Scooters/Bikes: may be used on the venue, please operate with respect for safety of horses and pedestrians.

It is your responsibility to read full facility regulations, which can be found at:

TERMS AND CONDITIONS OF ENTRY - QUEENSLAND STATE EQUESTRIAN CENTRE (qsec.com.au)



FOSJ MEDIA TEAM





We've got you covered...

2025 MEMBERSHIPS

Competitor

Participant

Recreational

Supporter

For more information on our memberships visit qld.equestrian.org.au



@equestrianqld



OAKS SPORT HORSES

SETTING THE STANDARD



Small Animal Vet Services

WestVETS has two locations for small animal patients; Marburg on the Warrego Highway and Anstead located west of Brisbane on Mt Crosby Rd. WestVETS Small Animal Hospitals provide medical and surgical services to all pets. We also offer a Door to Paw mobile veterinary service. With wide-reaching expertise, our veterinarians provide knowledgeable and compassionate quality veterinary care.



Equine Vet Services

The Equine Hospital is located at Anstead and provides routine and emergency speciality equine services. There is a purpose built equine operating theatre, padded recovery room, intensive care stables with CTV monitoring and an isolation facility. WestVETS accept referrals from other Veterinarians and works with your veterinarian when the horse returns home.



Equine Reproduction Services

Our Equine Reproduction Centre is based on 65 acres located of the Warrego Highway in Marburg. We have purpose-built paddocks for mares, foals and stallions. Our services include artificial insemination, embryo transfer, pregnancy scans and full stallion collection services. Our equine reproduction veterinarians are extremely knowledgeable and committed to getting a positive pregnancy.



WestVETS

LOCATIONS

Anstead Small Animal and Equine Hospital
Cnr Mt Crosby and Hawkesbury Rds
Anstead, Queensland 4070, Australia

Marburg Small Animal and Equine Reproduction Centre
2401 Warrego Hwy
Marburg, Queensland 4346, Australia

ICEPACK

Toughest there is.



Conditions of Entry

Conditions of Entry

- The Festival of Showjumping 2025, hereafter referred to as the 'event'.
- This event is conducted under Equestrian Australia rules.
- All nominations to be made via Equipe : **General Entries will open at 7.00pm Monday 2nd June 2025**
- **Early Entries** -the Equipe entry system will open before this time for our sponsors, world cup riders and our committee.
If you have not been invited to do so, entries placed before General Entries opening date will be **DELETED**
- **Nominations close:** 7.00pm Monday 9th June, if classes not full earlier.
- Entries will only be accepted once your payment has been processed
- **Number of Starts:** One start per day per horse. The only exception to this is the Bates Speed Challenge and Arena 3 on Friday 20th.
Note: If time permits, the OC may allow multiple starts and will advise if so on our event Facebook page.
- Per rider in a class - No rider will be permitted more than three (3) rides in any one class.
- **Wait lists** will be created for classes if over-subscribed, competitors will be notified of acceptance once nominations are finalised.
- **Equestrian Australia Waivers** must be signed and **Horse Health Declarations** must be completed prior to arrival. Prize money will be withheld if form not supplied. Links to online JotForms are on Equipe.
- Junior riders **cannot** compete in **Juniors and Young Rider** on the same horse.
- **Presentation** - riders must present to award ceremonies mounted (stallions may be substituted for presentation)
Please thank the class sponsors during presentation, and also in any social media posts you share.
- **Draws** will be posted on EQUIPE by 6pm each evening before competition. Rings 1 and 2 will take precedence.
- Horses may **not** start in both World Cup and **Mini Prix** Class
- **Young Horse** classes: age of horse on day of competition. One Start only for Classes 13,14,15. FEI Young Horse boot rule applies.
- Overall Style Champion will be the highest scoring horse from classes 13,14,15. In the event of equal scores, judges will decide winner.
- **David Overton Memorial Cup:** Horses aged 6,7,8 years - per EA Article 275 - Future Stars. FEI Young Horse boot rule applies.
- First Aid Levy \$10 per rider / day
- Ground Fee \$10 per horse / show
- Admin/Scoring Fee \$10 per horse / show
- **Changes** must be made by 5.00pm the day prior to class. Changes must be made at the event office. Do not phone for changes.
- Changes to nominations after 5.00pm the day prior, or on the day of a class may attract a \$5 administration fee.

Tour Rules

- Emerald Tour: starting height 1.10m, Final max. 1.20m. Horses in the Emerald Tour cannot compete in any class higher than 1.20m at this event. Rising Star Emerald Final must be 8 years or younger as of 29/06/2025.
- Ruby Tour: starting height 1.20m, Final max. 1.30m.
- Amateur Tour: starting height 1.10m, Final max. 1.20m. Regulations per EA rules.
- Junior Tour: starting height 1.20m, Final max. 1.30m. Regulations per EA rules
- Childrens' Tour: starting height 95cm, Final max. 1.05m. Regulations per EA rules
- Horse/rider combination **must compete in at least one** Tour Round to be eligible for the final.
- A horse may only compete in **ONE** Tour Final
- Tour Final draws will be seeded per leaderboard for each tour

TSHA Classes Eligibility: Horses must obtain a TSHA competition license to enter these classes. License is available on Global Entries Online (Manage Horses). Only horses with Thoroughbred Stud Book registration will be accepted. No part bred Thoroughbreds. For full details including how to obtain a license, visit: www.thoroughbredsporthorse.com.au

Magic Millions Qualifier: Riders must be 16 years or older, one horse per rider, horse must not have competed above 1.20m in 12 months prior to 5/1/2026, Rider must be employed directly or indirectly within the Australian thoroughbred racing industry. Top 25% Jump Off, Top 10 qualify for the Final in January 2026. See Magic Millions website for full t's and c's. <https://www.magicmillionspolo.com.au>

MANUEL
Equine Transport

Brisbane - Sydney - Melbourne

Air bag suspension - Angle load - Eftpos facility
Overnight stabling - Family owned business

MANUEL EQUINE TRANSPORT
Brisbane Sydney Melbourne
0408 537 904

Lachlan Manuel - 0408 537 904

TRH EQUINE VETS

THANK YOU TO OUR 2025 SPONSORS!

Bring workplaces and events to life!

1300 74 10 10



With over 30 years' experience in scaffolding, you can be assured we understand all facets of this industry and what it takes to build successful relationships with customers. At GIA Scaffolding, we deliver the highest standards of Service, Quality, Safety and Reliability. From initial scope to completion, we assist the customer on achieving the most cost effective, efficient and safest scaffold solution for their project.

"Our company has been working with Phil for over 5 years, and we consider him one of our team". "Phil is a big contributor to the success of our projects".

Gardner Vaughn Group

phill@gias.com.au Ph 0468 857 286

Get the right



HORSELAND STRATHPINE



TURIYA FARMS IS A PREMIER EQUESTRIAN FACILITY SET IN IDYLIC BYRON BAY, SPECIALIZING IN ELITE TRAINING AND TOP-TIER PERFORMANCE HORSES.



Conditions of Entry

Conditions of Entry (Cont'd)

- **Refunds** Before close of entries 7.00pm 12/06/2025: refund of accepted and paid entries will be given in full less a \$20 administration fee. After entries have closed: 50% refund of entry fees and 100% refund of first aid/ground fees will be given on presentation of a veterinary certificate. There will be **no refunds given for stables or camping fees after close of entries**.
- Notice of scratchings, and vet certificate if applicable, must be emailed to qldshowjumpclub@gmail.com
- All riders and owners must be financial members of EQ to compete in official classes, horses competing in official classes must hold current EA life registration, horses competing unofficial must hold min. EA base registration.
- Please visit EQ to learn what membership/registration yourself and your horse needs to compete at this event: <https://www.qld.equestrian.org.au/membership-categories>. All registrations/memberships will be checked by Equestrian Queensland.
- **DISCLAIMER** Statement of liability - neither the organising committee of The Festival of Showjumping, the committee of the Queensland Showjumping Club, QSEC or Equestrian Queensland accepts any liability for any accident, damage, injury or illness to horses, owners, riders, grounds, spectator or any other persons or property whatsoever.
- **HELMETS** Australian helmet standards will apply - ALL helmets must be EA tagged.
- **DRESS** all riders are to be dressed in accordance with FEI requirements.
- **HORSE BOOTS** Ensure you are using the correct boots! If unsure, ask one of our FEI Stewards before you compete.
- **SWABBING** the organising committee reserves the right to swab horses. Random swabbing of horses may be conducted in any official class. Horses chosen for swabbing must proceed directly to the swabbing area immediately after presentation.
- **BEHAVIOUR** all competitors must obey Equestrian Australia rules and competition etiquette. Those who fail to do so risk elimination from the event. QSEC appreciates the assistance of volunteers, and asks all competitors to show respect to them, officials & each other.
- **ABUSE** Abusive behaviour towards any personnel involved in the organisation and running of this event will not be tolerated. Any person inflicting abuse upon such personnel will be asked to leave the premises and all entries will be forfeited. The FEI requires all those involved in international equestrian sport to adhere to the FEI Code of Conduct and to acknowledge and accept that at all times the welfare of the Horse must be paramount. Welfare of the Horse must never be subordinated to competitive or commercial influences. We have a zero tolerance policy towards cruel and violent treatment of any person or animal.
- All owners and competitors will be personally responsible for damages to any third parties caused by themselves, their employees, their agents or their horses. Please ensure the safety of your children whilst in proximity to horses.
- The Organising Committee reserves the right to change or amend the program at it's discretion.
- ALL riders & their staff **MUST** read and accept these conditions of entry & the the rules & regulations of QSEC.

Event Enquiries - Officials: Ken Jensen 0418 880019

General Enquiries: Matt Wray 0448 825742 or Carly Overton 0428 611645

Stable Manager: Alison Ford 0419 646737

Farrier: Caitlin Downs - Saxby 0418862809 **On-Call Vet:** Charlotte Baynham - Equivet 0481 287 507

Chief FEI Steward: Bonwyn Hew 0423 392294 **FEI Treating Vet:** Trent Raeburn 0447 202600

Produce Supplies: Kilcoy Rural 07 54971322 **First Aid** Code 1 Medical 0416 157485

VENUE ACCESS

Spectator Parking: QSEC - Tuckeroo Drive, Caboolture

Competitor Day Parking: QSEC - Tuckeroo Drive, Caboolture

QSEC Stables MAIN Campground: Gate 14 Old Gympie Road, Caboolture

QSEC Stables NORTH,CENTRAL & Yards: Gate 15 Old Gympie Road, Caboolture

Our official produce supplier



Phone Orders
07 5497 1322

KILCOY RURAL
Friendly Distributors of Quality Rural Merchandise

THANK YOU TO OUR 2025 SPONSORS!



**WASHPOOL
LODGE**



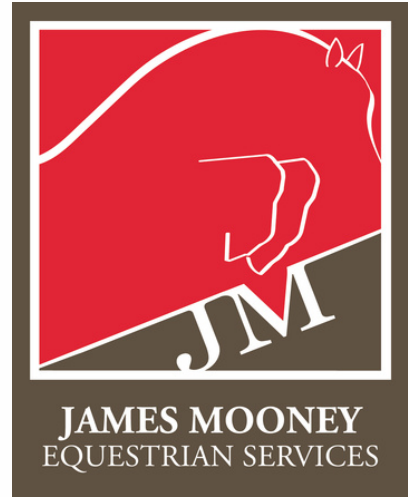
OVERTON
SHOWJUMPING



Gallagher



DCF
DOUBLE C FARMS.



Dupe
EQUINE



Thoroughbred
Sport Horse
Association



BELLAROO
EQUESTRIAN



yandina
FEED BARN
Ph: 5446 8611



THANK YOU TO OUR 2025 SPONSORS!

