



**PRYDE'S EASIFEED  
GATTON WORLD CUP  
17 - 20 June 2021**





# THE RIGHT CHOICE THIS WINTER

Perfect for  
senior  
horses.

No fuss  
solution for  
weight gain.

#1 Breeding  
& conditioning  
cube on the  
market.

No grain, low  
sugar. Perfect  
for metabolic  
horses.



1300 732 267 | [prydes.com.au](http://prydes.com.au)

# THURSDAY

17<sup>th</sup> June 2021

## PRYDE'S EASIFEED ARENA 1

7.30 AM START - 7.00am Walk the Course

- Class 1**     **1.35m Mini Prix 1<sup>st</sup> Qualifier – Article 238.2.1**  
**SPONSORED BY: BRICE TRAILERS**  
1<sup>st</sup> \$210 + bag Pryde's EasiFeed 2<sup>nd</sup> \$180 3<sup>rd</sup> \$130 4<sup>th</sup> \$120 5<sup>th</sup> \$90  
6<sup>TH</sup> \$70 7<sup>th</sup> \$23 8<sup>th</sup> \$23 9<sup>th</sup> \$23 10<sup>th</sup> \$23 (Total \$892)  
**Entry Fee \$23**
- Class 2**     **1.40m - Article 238.2.1**  
**SPONSORED BY: IOR RURAL**  
1<sup>st</sup> \$310 + bag Pryde's Easifeed 2<sup>nd</sup> \$265 3<sup>rd</sup> \$215 4<sup>th</sup> \$180 5<sup>th</sup> \$135 6<sup>th</sup> \$95 (Total \$1,200)  
**Entry Fee \$33**
- Class 3**     **Future Stars 1.25m for Horses 6, 7 & 8 years old 1<sup>st</sup> Qualifier - Article 238.2.1**  
**SPONSORED BY: HINO**  
1<sup>st</sup> \$210 2<sup>nd</sup> \$180 3<sup>rd</sup> \$130 4<sup>th</sup> \$120 5<sup>th</sup> \$90 6<sup>th</sup> \$70 (Total \$800)  
**Entry Fee \$23**

## PEACHESTER LODGE ARENA 2

7.30 AM START - 7.00am Walk the Course

- Class 4**     **1.10m Newcomer (Horses under 8 Points) 1<sup>st</sup> Qualifier – Article 274.2**  
**SPONSORED BY: GILLIAN EQUESTRIAN AND HUDS & TOKE**  
1<sup>st</sup> \$130 + bag Pryde's EasiFeed 2<sup>nd</sup> \$110 3<sup>rd</sup> \$90 4<sup>th</sup> \$75 5<sup>th</sup> \$55 6<sup>th</sup> \$40 7<sup>th</sup> \$15 8<sup>th</sup> \$15 9<sup>th</sup> \$15 10<sup>th</sup> \$15 (Total \$560)  
**Entry Fee \$15**
- Class 5**     **Young Rider 1.30m 1<sup>st</sup> Qualifier – Article 238.2.1**  
**SPONSORED BY: DA HALL AND CO**  
1<sup>st</sup> \$150 + bag Pryde's EasiFeed 2<sup>nd</sup> \$130 3<sup>rd</sup> \$110 4<sup>th</sup> \$90 5<sup>th</sup> \$70 6<sup>th</sup> 50 (Total \$600)  
**Entry Fee \$17**
- Class 6**     **1.10m Amateur 1<sup>st</sup> Qualifier – Article 274.2**  
**SPONSORED BY: CHUGGY EQUESTRIAN & DAVIDSON EQUESTRIAN**  
1<sup>st</sup> \$130 + bag Pryde's EasiFeed 2<sup>nd</sup> \$110 3<sup>rd</sup> \$90 4<sup>th</sup> \$75 5<sup>th</sup> \$55 6<sup>th</sup> \$40 (Total \$500)  
**Entry Fee \$13**



# PEACHESTER LODGE



RAISING EQUINE ATHLETES

**ior**  
**RURAL**

Bulk fuel & lubricants.

07 4526 7538 | [IOR-RURAL.COM.AU](http://IOR-RURAL.COM.AU)



# FRIDAY

18<sup>th</sup> June 2021

## PRYDE'S EASIFEED ARENA 1

7.30 AM START - 7.00am Walk the Course

- Class 7**     1.35m – 1.40m Mini Prix 2nd Qualifier – Article 274.2  
**SPONSORED BY : PEACHESTER LODGE**  
1<sup>st</sup> \$210 2<sup>nd</sup> \$180 3<sup>rd</sup> \$130 4<sup>th</sup> \$120 5<sup>th</sup> \$90 6<sup>th</sup> \$70 7<sup>th</sup> \$23 8<sup>th</sup> \$23 9<sup>th</sup> \$23 10<sup>th</sup> \$23  
(Total \$892)  
**Entry Fee \$23**
- Class 8**     1.45m – 1.50m - Article 274.2  
**SPONSORED BY: FINCH FARM**  
1<sup>st</sup> \$310 + bag Pryde's Easifeed 2<sup>nd</sup> \$265 3<sup>rd</sup> \$215 4<sup>th</sup> \$180 5<sup>th</sup> \$135 6<sup>th</sup> \$95  
(Total \$1,200)  
**Entry Fee \$33**
- Class 9**     Young Rider National Series 2<sup>nd</sup> Qualifier – Article 238.2.2  
**SPONSORED BY: ANTARES AUSTRALIA & CALICO PONY & THE J'TAIME**  
1<sup>st</sup> \$210 2<sup>nd</sup> \$180 3<sup>rd</sup> \$130 4<sup>th</sup> \$120 5<sup>th</sup> \$90 6<sup>th</sup> \$70 (Total \$800)  
**Entry Fee \$23**

## PEACHESTER LODGE ARENA 2

7.30 AM START - 7.00am Walk the Course

- Class 10**     1.10m – 1.15m Newcomer (Horses under 8 Points) 2nd Qualifier – Article 238.2.1  
**SPONSORED BY: K & R PLUMBING**  
1<sup>st</sup> \$130 2<sup>nd</sup> \$110 3<sup>rd</sup> \$90 4<sup>th</sup> \$75 5<sup>th</sup> \$55 6<sup>th</sup> \$40 7<sup>th</sup> \$15 8<sup>th</sup> \$15 9<sup>th</sup> \$15 10<sup>th</sup> \$15  
(Total \$560)  
**Entry Fee \$15**
- Class 11**     Future Stars 1.30m for Horses 6, 7, & 8 years old 2<sup>nd</sup> Qualifier - Article 274.2  
**SPONSORED BY: HINO**  
1<sup>st</sup> \$210 2<sup>nd</sup> \$180 3<sup>rd</sup> \$130 4<sup>th</sup> \$120 5<sup>th</sup> \$90 6<sup>th</sup> \$70 (Total \$800)  
**Entry Fee \$23**
- Class 12**     1.15m Junior 1<sup>st</sup> Qualifier – Article 238.2.1  
**SPONSORED BY: MORNING VIEW HORSE STUD & HOSS X**  
1<sup>st</sup> \$130 + bag Pryde's EasiFeed 2<sup>nd</sup> \$110 3<sup>rd</sup> \$90 4<sup>th</sup> \$75 5<sup>th</sup> \$55 6<sup>th</sup> \$40  
(Total \$500)  
**Entry Fee \$15**



South East Queensland based business specialising in quality built, custom made horse floats, goosenecks and trailers.

#BriceTrailers #BuiltBetter





# SATURDAY

19<sup>th</sup> June 2021

## PRYDE'S EASIFEED ARENA 1

7.30 AM START - 7.00am Walk the Course

**Class 13** 1.15m Newcomers Championship (For top 30 placed horses from both qualifiers) Article 238.2.2

**SPONSORED BY: LANGFIELD LODGE**

1<sup>st</sup> \$200 + 1 bag Pryde's EasiFeed + Rug & Garland

2<sup>nd</sup> \$160 3<sup>rd</sup> \$120 4<sup>th</sup> \$100 5<sup>th</sup> \$70 6<sup>th</sup> \$60 7<sup>th</sup> \$50 8<sup>th</sup> \$40 (Total \$800)

**Entry Fee \$23**

**Class 14** Future Stars Championship - 1.35m for Horses 6, 7 & 8 years old (For top 30 placed horses from both qualifiers) - Article 238.2.2

**SPONSORED BY: HINO**

1<sup>st</sup> \$750 + 1 bag of Pryde's EasiFeed + Rug & Garland

2<sup>nd</sup> \$600 3<sup>rd</sup> \$450 4<sup>th</sup> \$300 5<sup>th</sup> \$240 6<sup>th</sup> \$210 7<sup>th</sup> \$150 8<sup>th</sup> \$120 9<sup>th</sup> \$90 10<sup>th</sup> \$90

(Total \$3,000)

**Entry Fee \$80**

**TROT UP FOR CLASS 15 WILL BE HELD AT 10AM SATURDAY 19 JULY 2021**

**Class 15** 1.25m – 1.30m The FEI World Jumping Challenge - Competition 3 – Article 273 3.3.2

Youth Olympic Games COC Qualifier. Only athletes born between 1<sup>st</sup> of January 2004 and 31<sup>st</sup> December 2007 are eligible to compete in this event. Competitors may compete on more than one horse, but they must nominate which is their qualifying horse and compete on that horse first.

**SPONSORED BY: PRYDE'S EASIFEED**

1<sup>st</sup> \$130 + 1 bag of Pryde's EasiFeed 2<sup>nd</sup> \$110 3<sup>rd</sup> \$90 4<sup>th</sup> \$75 5<sup>th</sup> \$55 6<sup>th</sup> \$40 (Total \$500)

**Entry Fee \$15**

## PEACHESTER LODGE ARENA 2

7.30 AM START - 7.00am Walk the Course

**Class 16** 1.20m Junior 2<sup>nd</sup> Qualifier – Article 274.2

**SPONSORED BY: JM EQUESTRIAN**

1<sup>st</sup> \$130 2<sup>nd</sup> \$110 3<sup>rd</sup> \$90 4<sup>th</sup> \$75 5<sup>th</sup> \$55 6<sup>th</sup> \$40 (Total \$500)

**Entry Fee \$15**

**Class 17** 1.10m – 1.15m Amateur 2<sup>nd</sup> Qualifier – Article 238.2.1

**SPONSORED BY: HILLCOTE BULK HAULAGE & TOM SEDGER FARRIER**

1<sup>st</sup> \$130 2<sup>nd</sup> \$110 3<sup>rd</sup> \$90 4<sup>th</sup> \$75 5<sup>th</sup> \$55 6<sup>th</sup> \$40 (Total \$500)

**Entry Fee \$15**

**Class 18** Open 1.20m - Article 238.2.1

**SPONSORED BY: KOLORA LODGE & FAIRVIEW PERFORMANCE HORSES**

1<sup>st</sup> \$150 2<sup>nd</sup> \$130 3<sup>rd</sup> \$110 4<sup>th</sup> \$90 5<sup>th</sup> \$70 6<sup>th</sup> \$50 (Total \$600)

**Entry Fee \$17**



EQUESTRIAN  
QUEENSLAND

# SIMPLE STEPS TO KEEP YOURSELF, EQUESTRIANS & OTHERS SAFE

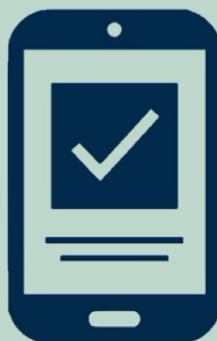


**STAY AT  
HOME  
IF YOU  
ARE SICK**

GET TESTED  
IF YOU HAVE  
SYMPTOMS



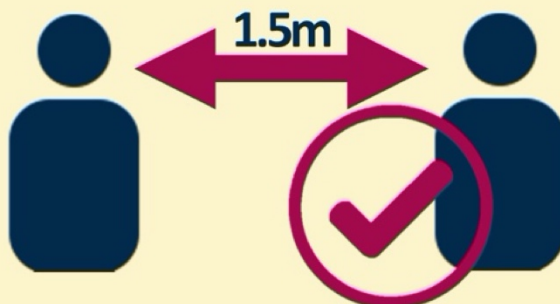
**CHECK IN/  
CHECK OUT**



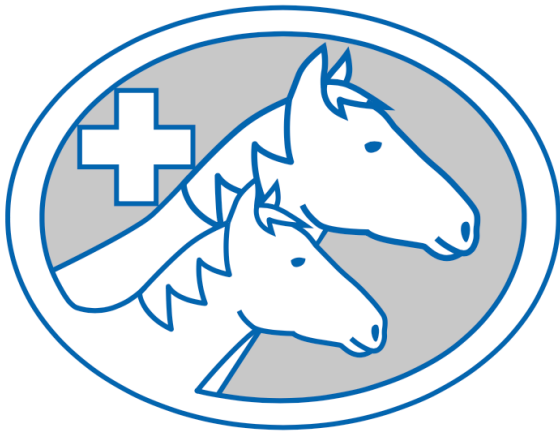
**PRACTICE  
GOOD  
HYGIENE**



**KEEP  
PHYSICAL  
DISTANCING**







# WestVETS

Equine Hospital &  
Equine Reproduction Centre

[www.westvets.com.au](http://www.westvets.com.au)

# TOUGHEST AIRCON

**ICEPACK**

ICEPACK.COM.AU  
1800 625 746



# SUNDAY

20<sup>th</sup> June 2021

## PRYDE'S EASIFEED ARENA 1

7.30 AM START - 7.00am Walk the Course

**Class 19**     **Young Rider Championship (For top 20 placed horses in both qualifiers) – Article 238.2.2**  
**SPONSORED BY: BRICE TRAILERS**  
1<sup>st</sup> \$200 + 1 bag of Pryde's EasiFeed + Rug & Garland  
2<sup>nd</sup> \$160 3<sup>rd</sup> \$120 4<sup>th</sup> \$100 5<sup>th</sup> \$70 6<sup>th</sup> \$60 7<sup>th</sup> \$50 8<sup>th</sup> \$40 (Total \$800)  
**Entry Fee \$23**

**Class 20**     **1.40m Mini Prix Championship (For top 30 placed horses in both qualifiers) – Article 238.2.2**  
**SPONSORED BY: PEACHESTER LODGE**  
1<sup>st</sup> \$750 + 1 bag Pryde's EasiFeed + Rug & Garland  
2<sup>nd</sup> \$600 3<sup>rd</sup> \$450 4<sup>th</sup> \$360 5<sup>th</sup> \$270 6<sup>th</sup> \$240 7<sup>th</sup> \$180 8<sup>th</sup> \$1500 (Total \$3,000)  
**Entry Fee \$80**

### **World Cup Trot Up** **8am Sunday 20<sup>th</sup> JUNE 2021**

Prize for Best Presented Male Rider & Horse combination in Trot up

**SPONSORED BY: TRAILRACE SADDLERY**

Prize for Best Presented Female Rider & Horse combination in Trot up

**SPONSORED BY: TRAILRACE SADDLERY**

**Class 21**     **Magic Millions World Cup Qualifier - Article 273 2.2 3.3.1 4.3**  
**SPONSORED BY: MAGIC MILLIONS**  
1<sup>st</sup> \$3,750 + bag Pryde's EasiFeed + Rug & Garland  
2<sup>nd</sup> \$3,000 3<sup>rd</sup> \$2,250 4<sup>th</sup> \$1,500 5<sup>th</sup> \$1,050 6<sup>th</sup> \$900 7<sup>th</sup> \$750 8<sup>th</sup> \$600  
9<sup>th</sup> \$450 10<sup>th</sup> 300  
11<sup>th</sup> \$300 12<sup>th</sup> \$150 (Total \$15,000) **Entry Fee \$375**  
**(this includes: Swabbing Fee - \$35.50 & Rider Levy - \$110)**  
Best presented horse & rider combination in the World Cup class will  
receive a woollen rug  
**SPONSORED BY: THE HIGGINS FAMILY, TREMORNE PARK**







*We've got **you** covered...*

---

## 2021 MEMBERSHIPS

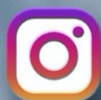
Competitor

Participant

Recreational

Supporter

For more information on our memberships visit [qld.equestrian.org.au](http://qld.equestrian.org.au)



@equestrianqld

# SUNDAY

20<sup>th</sup> June 2021

## PEACHESTER LODGE ARENA 2

7.30 AM START - 7.00am Walk the Course

**Class 22**     **Open 1.25m (For top 30 placed horses in class no 18) – Article 274.2**  
**SPONSORED BY: WEST VETS**  
1<sup>st</sup> \$200 + 1 bag Pryde's EasiFeed 2<sup>nd</sup> \$160 3<sup>rd</sup> \$120 4<sup>th</sup> \$100 5<sup>th</sup> \$70  
6<sup>th</sup> \$60  
7<sup>th</sup> \$50 8<sup>th</sup> \$40 (Total \$800)

**Entry Fee \$23**

**Class 23**     **Junior Championship (For top 20 placed horses in both qualifiers) - Article 238.2.2**  
**SPONSORED BY: ICE PACK**  
1<sup>st</sup> \$200 + 1 bag Pryde's EasiFeed + Rug & Garland  
2<sup>nd</sup> \$160 3<sup>rd</sup> \$120 4<sup>th</sup> \$100 5<sup>th</sup> \$70 6<sup>th</sup> \$60 7<sup>th</sup> \$50 8<sup>th</sup> \$40 (Total \$800)

**Entry Fee \$23**

**Class 24**     **1.20m Queensland State Amateur Championship (For top 20 placed horses from both qualifiers) – Article 238.2.2**  
**SPONSORED BY: EQUILEGAL**  
1<sup>st</sup> \$200 + 1 bag Pryde's EasiFeed + Rug & Garland  
2<sup>nd</sup> \$160 3<sup>rd</sup> \$120 4<sup>th</sup> \$100 5<sup>th</sup> \$70 6<sup>th</sup> \$60 7<sup>th</sup> 50 8<sup>th</sup> \$40 (Total \$800)

**Entry Fee \$23**

### OTHER AWARDS

**Leading Off The Track Thoroughbred competing in Rings 1 & 2**  
\$500 + Rug & Garland

**SPONSORED BY – PEACHESTER LODGE**





From Paddock to Podium

Finch Farm Ph: 0412 147 838 Email: [info@finchfarm.com.au](mailto:info@finchfarm.com.au)



**EQUESTRIAN  
QUEENSLAND  
JUMPING  
QUEENSLAND**

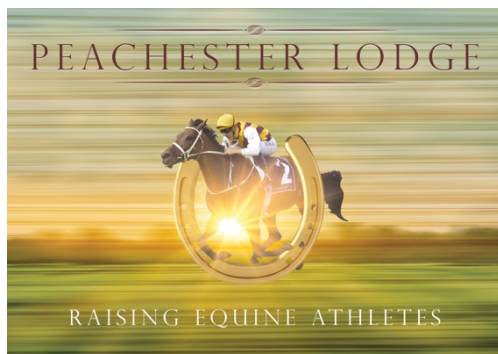
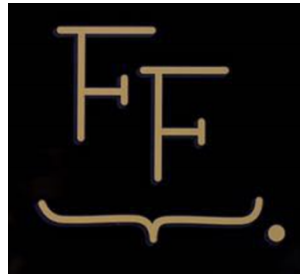
*Thank you to  
Equestrian Queensland  
and Jumping Queensland  
who have provided  
funding to support our event.*



[www.qld.equestrian.org.au](http://www.qld.equestrian.org.au)

**K&R  
PLUMBING SUPPLIES**

# SPONSORS



**WestVETS**  
Equine Hospital &  
Equine Reproduction Centre



EQUESTRIAN  
QUEENSLAND





# SPONSORS



**MORNING VIEW**  
SPELLING & AGISTMENT

*Calico Pony*  
by Katie Mendl



**TOM SEDGER  
FARRIER  
SERVICE**



*"Creating Awesome Memories"*



**KOLORA LODGE**



*The Itaime*  
BY JEDD JOHNSTONE



GILLAN EQUESTRIAN



**HILLCOTE BULK HAULAGE**





*The Jtaime*  
BY JEDD JOHNSTONE

*Equestrian focused digital services*

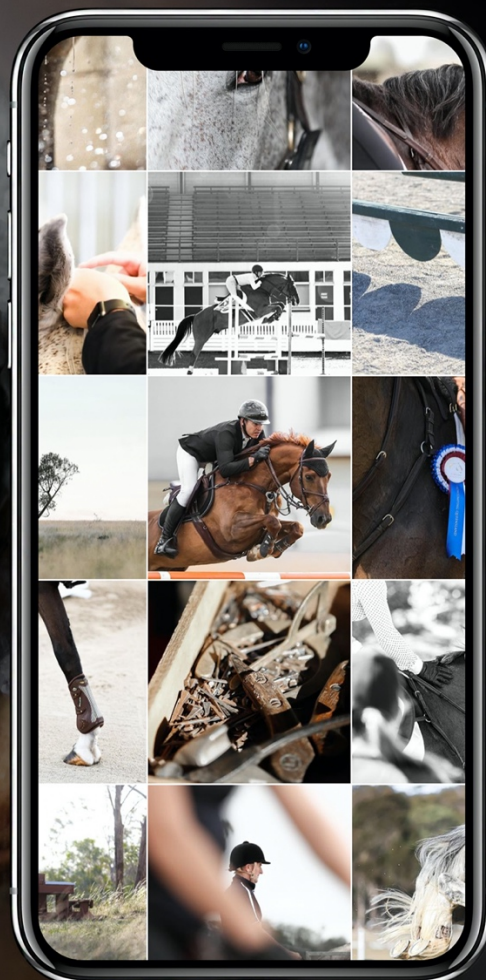
**SOCIAL MEDIA  
MANAGEMENT**

**CONTENT  
CREATION**

**MARKETING &  
PUBLIC RELATIONS**

**WEB DESIGN**

Contact [info@thejtaime.com](mailto:info@thejtaime.com) or visit  
[www.thejtaime.com](http://www.thejtaime.com) for more information



# CONDITIONS OF ENTRY

- Entries will open on Global Entries on-line at 7pm on 10<sup>th</sup> May 2021
- All ENTRIES, STABLES, CAMPING and FIRST AID, must be lodged by the 21<sup>st</sup> May 2021 on Global Entries by 7pm
- Wait lists will be created for all classes. The committee will review numbers after close of nominations and advise applicants
- Any entry enquiries are to be sent to [gattonwcentries@gmail.com](mailto:gattonwcentries@gmail.com)
- Any special stabling requests are to be sent to [gattonwcstables@gmail.com](mailto:gattonwcstables@gmail.com)
- NO REFUNDS AFTER CLOSE OF ENTRIES
- The Organising Committee reserves the right at their absolute discretion to alter or amend the program or any of the conditions, regulations, or any aspect of the event as they see fit.
- **WORLD CUP**
  - The Closing Date for WORLD CUP entries will be 21<sup>ST</sup> May 2021 at 7pm. No entries for this event will be accepted after this date.
  - It is now a FEI requirement that World Cup horses MUST be stabled on the grounds for 24 hours before the World Cup Class, so therefore World Cup Horses MUST be at the grounds by 12 Noon on Saturday 19<sup>th</sup> June 2021
    - Foreign Judge Kaye Williams
    - Chairman of the Jury Kaye Williams
    - Ground Jury Member Michael Archer
    - Ground Jury Member Hayley Somerset
    - Ground Jury Member Christine Bradfield
    - Course Designer Graeme Watts
    - Assistant Course Designer David Sheppard
    - FEI Chief Steward Bronwyn Hew
    - FEI Assistant Stewards James Kelly  
Jenny Merity  
Edwina Mitchell  
Arslan Ansari
    - Timing Geoff Goldrick
    - FEI Veterinary Delegate Dr Kathy Humphrey
    - FEI Permitted Treating Vet Dr Frank Low
    - First Aid 1300 Medics
    - Farrier Tom Sedger
- A stable bond of \$25 is included in the block fee and will be refunded if the stables are left in a clean and tidy state
- Stabling will be at the block fee of \$245 per horse for the event
- Build your own yards are permitted for the cost of \$40 **per horse** for the event
- No Electric Fences allowed
- Camping will have a block fee of \$125 for the event
- \$25 per rider First Aid levy
- A \$20 administration fee will be charged on each rider's nominations



- Horses are allowed ONE START PER DAY, with the exception of Saturday, when riders eligible for Class 15 the FEI World Jumping Challenge (riders born between 1 January 2004 and 31 December 2007) may also compete in a qualifier for their appropriate Championship event.
- World Cup horses ARE NOT ELIGIBLE TO COMPETE IN THE MINI PRIX CLASSES AT THIS EVENT
- Points over two Qualifiers count towards the final. Top combinations overall into the finals
- All qualifier rounds must be the same horse and rider combination, including the final
- A horse can only compete in ONE Championship class
- The age of the horse and the points they have will remain as from the START of the show
- Ring 1 will be strictly draw order ONLY
- **All placegetters MUST present at presentations mounted (stallions may be substituted with another horse for presentations), or prizemoney is forfeited**
- Any changes that need to be made to entries at the event can be done on-line on Global Entries On-line only between 3pm and 5pm on Thursday, Friday and Saturday of the event.
- All riders and owners must be financial members of the EA to compete and all horses competing must hold current EA registration and performance cards. Riders may be required to present horse registration/performance cards upon request of the committee.
- DRESS – All riders to be dressed according to the FEI requirements and those attired incorrectly will not be allowed to start.
- Australian Helmet standards will apply
- All riders must wear riding boots and an approved helmet at all times while mounted
- SWABBING: The Organising Committee reserves the right to swab horses. Random swabbing of horses may be conducted in any class. Horses chosen for swabbing must proceed directly to the swabbing box immediately after the presentation.
- Microchips will be scanned and checked at the show
- Dogs – **MUST** be on a lead or secured at all times. Dog waste must be collected. Dog owners will be fined \$25.00 if their dog fouls an area.
- Manure is to be deposited in signed areas ONLY – (not under trees or against stable wall) Tractor and bucket must be able to access it.

## Article 255 – Amateur Riders

1. Amateur Rider classes are classes for Athletes who:
  - Must not have competed in an Olympic Games or World Equestrian Games in either Jumping or Eventing
  - In the past 10 years must not have competed in a World Cup for Jumping Riders qualifying round or in a 4\* 3 day event.
  - Must not have competed in section 1 and 2 at a Royal Show in Sydney, Brisbane, Melbourne, Adelaide or Perth in the past two years
  - Amateur Riders may not compete in an Amateur class if they compete in a class where the first round is higher than 1.20m at the show.

- Amateur Riders may not compete in an Amateur class on a Horse that will compete in any class where the first round is higher than 1.20m at that show.

1.1 Athletes must meet the membership requirements as set out in the EA General Regulations.

1.2 Athletes may compete as amateurs from the beginning of the calendar year in which they turn 21 years of age. Equestrian Australia National Jumping Rules 45

1.3 Organisers may at their discretion limit the number of horses an Athlete can start.

1.4 The course shall be free-flowing and relatively simple. The first obstacle in the first round should be 10cm lower than the advertised starting height of the Competition.

1.5 There will be a maximum height rise of 10cm for the jump-off.

### Future Stars classes

1. For Horses that are 6, 7 & 8 years from date of birth on the first day of competition.
2. Any Horse that has started in a World Cup Class cannot compete in any Future Stars, Futurity or Stars of the Futures classes.

## VIII. TIMETABLE

Competitions must not start before 08:00 and must not finish after 23:00, unless prior approval is granted by the FEI.

|   | Day    | Date     | Time       |
|---|--------|----------|------------|
| Horse Inspection ( <i>All horses taking part in this Event must be present during the first horse inspection, unless unable to do so due to "force majeure"</i> ) | Sunday | 20/06/21 | 8am to 9am |
| Horse Re-Inspection   | Sunday | 20/06/21 | 10.30am    |

# OTHER INFORMATION

## **Ring 1 – Pryde's Easifeed Arena**

Course Builder – Graeme Watts

Assistant Course Builder – Terri Langdon & Rebecca Henry

Judge – Kaye Williams

## **Ring 2 – Peachester Lodge Arena**

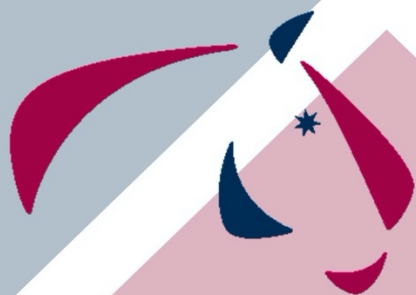
Course Builder – David Sheppard

Assistant Course Builder – Terri Langdon & Rebecca Henry

Judge – Hayley Somerset

- All Fees will only apply until Monday morning the 21<sup>st</sup> June 2021. Anyone staying at the showgrounds after this will need to have made arrangements with the Lockyer Indoor Equestrian Centre. Email – [info@gattonindoor.org](mailto:info@gattonindoor.org) or call Wendy Palmer on 0428 621744
- FEI Treating vet on Call is Dr Frank Low.
- For Emergencies Call – WestVets – 07 3202 7300
- On call farrier is Tom Sedger Farrier Service – mobile number 0417 076 144
- Feed – Cottones Discount Feed Shed will deliver for Free to the grounds please call – 07 5462 3453
- The Event office will close 30 minutes before and then stay closed until 30 minutes after the World Cup class on Sunday to enable staff to watch the event.
- Top 20 or 30 placed horses for Championships will be selected via the following system:
  - ◆ The overall winner of a qualifying class will receive the same number of points as horses in the class e.g. if there are 50 horses in the class, the winner will receive 51 points, 2<sup>nd</sup> place 49 and so on down to 1 point for the last horse
  - ◆ The points received in the two classes will be combined and the highest 20 or 30 scores will receive a place in the Championship class.

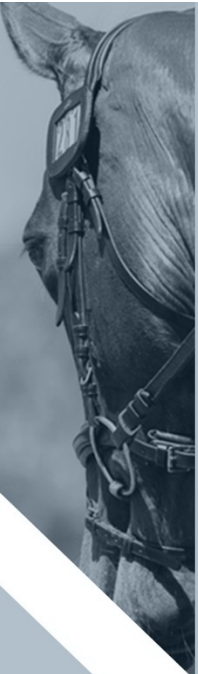




# EQUESTRIAN QUEENSLAND

MEMBERSHIPS  
COMPETITOR  
PARTICIPANT  
SUPPORTER  
RECREATIONAL  
[qld.equestrian.org.au](http://qld.equestrian.org.au)

## 2021



# Stay safe with the Check In Qld app



Check In Qld

Download the app from



Open the app and scan the QR code  
to register your visit

Jumping Queensland

## Jumping Queensland



(414) 935 802 250 527 3

Can't scan? Enter the code **505273** manually to check in.

Thank you for supporting COVID-19 contact tracing efforts  
and doing your bit to keep Queenslanders safe.



**PRYDE'S EASIFEED  
GATTON WORLD CUP  
2021**